

## Anti-FGB antibody (30-300) [1F9] (STJ98070)

STJ98070

### GENERAL INFORMATION

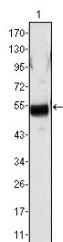
<b>Product Type</b>	Primary antibodies
<b>Short Description</b>	Mouse monoclonal antibody anti-Fibrinogen Beta Chain Cleaved Into-Fibrinopeptide B-Fibrinogen Beta Chain (30-300) is suitable for use in Western Blot and ELISA research applications.
<b>Applications</b>	WB, ELISA
<b>Host/Source</b>	Mouse
<b>Reactivity</b>	Human

### PRODUCT PROPERTIES

<b>Clonality</b>	Monoclonal
<b>Clone ID</b>	1F9
<b>Concentration</b>	
<b>Conjugation</b>	Unconjugated
<b>Purification</b>	The antibody was isolated from ascitic fluid by immunoaffinity chromatography using antigens coupled to agarose beads.
<b>Dilution</b>	WB 1:500-1:2000
<b>Range</b>	ELISA 1:10000
<b>Formulation</b>	Ascitic fluid, 0.03% Sodium Azide, 0.5% BSA, 50% Glycerol.
<b>Isotype</b>	IgG1
<b>Storage</b>	Store at -20°C for up to 1 year from the date of receipt, and avoid repeat freeze-thaw cycles.
<b>Instruction</b>	

### TARGET INFORMATION

<b>Gene ID</b>	2244
<b>Gene Symbol</b>	FGB
<b>Uniprot ID</b>	FIBB_HUMAN
<b>Immunogen</b>	Purified recombinant fragment of human Fibrinogen Beta (aa30-300) expressed in E.coli.
<b>Immunogen Region</b>	30-300
<b>Specificity</b>	FGB monoclonal antibody (Fibrinogen Beta Chain Cleaved Into-Fibrinopeptide B-Fibrinogen Beta Chain) binds to endogenous Fibrinogen Beta Chain Cleaved Into-Fibrinopeptide B-Fibrinogen Beta Chain at the amino acid region 30-300.
<b>Immunogen Sequence</b>	



Western blot analysis using Fibrinogen Beta monoclonal antibody against human plasma (1).

This product is suitable for in-vitro studies under the RESEARCH USE ONLY [RUO] licence. This product must not be used as for diagnostic or other medical purposes.  
 St John's Laboratory Ltd, Knowledge Dock Business Centre, University Way, London, E16 2RD | Tel: 0208 223 3081