

Anti-ETS1 antibody [10D2] (STJ98058)

STJ98058

GENERAL INFORMATION

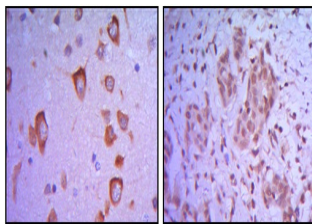
Product Type	Primary antibodies
Short Description	Mouse monoclonal antibody anti-Protein C-Ets-1 is suitable for use in Western Blot, Immunohistochemistry, Immunofluorescence and ELISA research applications.
Applications	WB, IHC-P, IF-P, ELISA
Host/Source	Mouse
Reactivity	Human

PRODUCT PROPERTIES

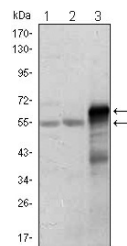
Clonality	Monoclonal
Clone ID	10D2
Concentration	
Conjugation	Unconjugated
Purification	The antibody was isolated from ascitic fluid by immunoaffinity chromatography using antigens coupled to agarose beads.
Dilution Range	WB 1:500-1:2000 IHC 1:200-1:1000 ELISA 1:10000
Formulation	Ascitic fluid, 0.03% Sodium Azide, 0.5% BSA, 50% Glycerol.
Isotype	IgG1
Storage Instruction	Store at -20°C for up to 1 year from the date of receipt, and avoid repeat freeze-thaw cycles.

TARGET INFORMATION

Gene ID	2113
Gene Symbol	ETS1
Uniprot ID	ETS1_HUMAN
Immunogen	Purified recombinant fragment of human ETS1 expressed in E.coli.
Immunogen Region	
Specificity	ETS1 monoclonal antibody (Protein C-Ets-1) binds to endogenous Protein C-Ets-1.
Immunogen Sequence	



Immunohistochemistry analysis of paraffin-embedded human brain tissue (A) and breast tumor (B) with AEC staining using ETS1 monoclonal antibody.



Western blot analysis using ETS1 monoclonal antibody against Jurkat (1), HepG2 (2) and ETS1-hlgGfC transfected HEK293 (3) cell lysate.