

Anti-ETS1 antibody [8A8] (STJ98057)

STJ98057

GENERAL INFORMATION

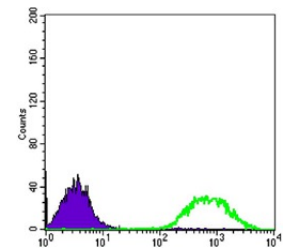
Product Type	Primary antibodies
Short Description	Mouse monoclonal antibody anti-Protein C-Ets-1 is suitable for use in Western Blot, Immunohistochemistry, Immunofluorescence, Immunocytochemistry, Flow Cytometry and ELISA research applications.
Applications	WB, IHC-P, IF, ICC, FC, ELISA
Host/Source	Mouse
Reactivity	Human

PRODUCT PROPERTIES

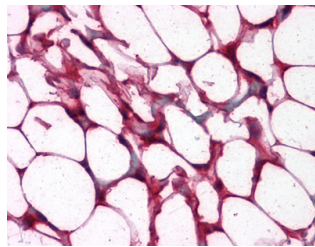
Clonality	Monoclonal
Clone ID	8A8
Concentration	
Conjugation	Unconjugated
Purification	The antibody was isolated from ascitic fluid by immunoaffinity chromatography using antigens coupled to agarose beads.
Dilution Range	WB 1:500-1:2000 IHC 1:200-1:1000 IF 1:200-1:1000 FC 1:200-1:400 ELISA 1:10000
Formulation	Ascitic fluid, 0.03% Sodium Azide, 0.5% BSA, 50% Glycerol.
Isotype	IgG1
Storage Instruction	Store at -20°C for up to 1 year from the date of receipt, and avoid repeat freeze-thaw cycles.

TARGET INFORMATION

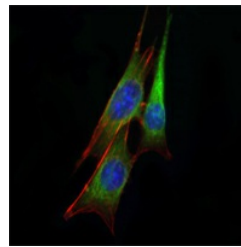
Gene ID	2113
Gene Symbol	ETS1
Uniprot ID	ETS1_HUMAN
Immunogen	Purified recombinant fragment of human ETS1 expressed in E.coli.
Immunogen Region	
Specificity	ETS1 monoclonal antibody (Protein C-Ets-1) binds to endogenous Protein C-Ets-1.
Immunogen Sequence	



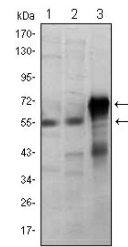
Flow cytometric analysis of Jurkat cells using ETS1 monoclonal antibody (green) and negative control (purple).



Immunohistochemistry analysis of paraffin-embedded human Colon, Adipocytes tissues with AEC staining using ETS1 monoclonal antibody.



Immunofluorescence analysis of NIH/3T3 cells using ETS1 monoclonal antibody (green). Blue: DRAQ5 fluorescent DNA dye.



Western blot analysis using ETS1 monoclonal antibody against Jurkat (1), HepG2 (2) and ETS1-hlgGfC transfected HEK293 (3) cell lysate.

This product is suitable for in-vitro studies under the RESEARCH USE ONLY [RUO] licence. This product must not be used as for diagnostic or other medical purposes.
St John's Laboratory Ltd, Knowledge Dock Business Centre, University Way, London, E16 2RD | Tel: 0208 223 3081