

Anti-SETDB1 antibody [5H6D4] (STJ98055)

STJ98055

GENERAL INFORMATION

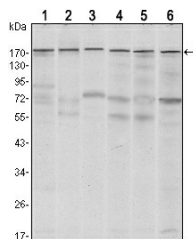
Product Type	Primary antibodies
Short Description	Mouse monoclonal antibody anti-Histone-Lysine N-Methyltransferase Setdb1 is suitable for use in Western Blot and ELISA research applications.
Applications	WB, ELISA
Host/Source	Mouse
Reactivity	Human, Mouse, Monkey

PRODUCT PROPERTIES

Clonality	Monoclonal
Clone ID	5H6D4
Concentration	
Conjugation	Unconjugated
Purification	The antibody was isolated from ascitic fluid by immunoaffinity chromatography using antigens coupled to agarose beads.
Dilution Range	WB 1:500-1:2000 ELISA 1:10000
Formulation	Ascitic fluid, 0.03% Sodium Azide, 0.5% BSA, 50% Glycerol.
Isotype	IgG1
Storage Instruction	Store at -20°C for up to 1 year from the date of receipt, and avoid repeat freeze-thaw cycles.

TARGET INFORMATION

Gene ID	9869
Gene Symbol	SETDB1
Uniprot ID	SETB1_HUMAN
Immunogen	Purified recombinant fragment of human ESET expressed in E.coli.
Immunogen Region	
Specificity	SETDB1 monoclonal antibody (Histone-Lysine N-Methyltransferase Setdb1) binds to endogenous Histone-Lysine N-Methyltransferase Setdb1.
Immunogen Sequence	



Western blot analysis using ESET monoclonal antibody against MCF-7 (1), T47D (2), HEK293 (3), JURKAT (4), NIH/3T3 (5) and F9 (6) cell lysate.

This product is suitable for in-vitro studies under the RESEARCH USE ONLY [RUO] licence. This product must not be used as for diagnostic or other medical purposes.
St John's Laboratory Ltd, Knowledge Dock Business Centre, University Way, London, E16 2RD | Tel: 0208 223 3081