

Anti-MAPK6 antibody [4E8] (STJ98048)

STJ98048

GENERAL INFORMATION

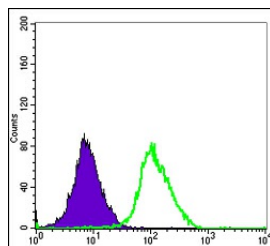
Product Type	Primary antibodies
Short Description	Mouse monoclonal antibody anti-Mitogen-Activated Protein Kinase 6 is suitable for use in Western Blot, Flow Cytometry and ELISA research applications.
Applications	WB, FC, ELISA
Host/Source	Mouse
Reactivity	Human

PRODUCT PROPERTIES

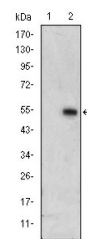
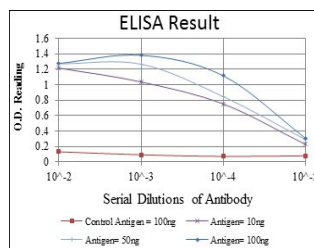
Clonality	Monoclonal
Clone ID	4E8
Concentration	
Conjugation	Unconjugated
Purification	The antibody was isolated from ascitic fluid by immunoaffinity chromatography using antigens coupled to agarose beads.
Dilution Range	WB 1:500-1:2000 FC 1:200-1:400 ELISA 1:10000
Formulation	Ascitic fluid, 0.03% Sodium Azide, 0.5% BSA, 50% Glycerol.
Isotype	IgG1
Storage Instruction	Store at -20°C for up to 1 year from the date of receipt, and avoid repeat freeze-thaw cycles.

TARGET INFORMATION

Gene ID	5597
Gene Symbol	MAPK6
Uniprot ID	MK06_HUMAN
Immunogen	Purified recombinant fragment of human ERK 3 expressed in E.coli.
Immunogen Region	
Specificity	MAPK6 monoclonal antibody (Mitogen-Activated Protein Kinase 6) binds to endogenous Mitogen-Activated Protein Kinase 6.
Immunogen Sequence	



Flow cytometric analysis of HeLa cells using ERK 3 monoclonal antibody (green) and negative control (purple).



Western blot analysis using ERK 3 monoclonal antibody against HEK293 (1) and ERK3-hlgGfc transfected HEK293 (2) cell lysate.