

Anti-MAPK1 antibody [4C11] (STJ98047)

STJ98047

GENERAL INFORMATION

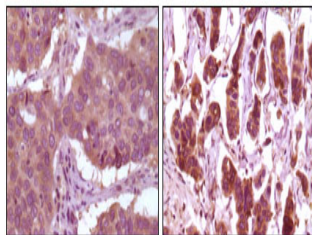
Product Type	Primary antibodies
Short Description	Mouse monoclonal antibody anti-Mitogen-Activated Protein Kinase 1 is suitable for use in Western Blot, Immunohistochemistry, Immunofluorescence, Immunocytochemistry and ELISA research applications.
Applications	WB, IHC-P, IF, ICC, ELISA
Host/Source	Mouse
Reactivity	Human, Mouse, Monkey

PRODUCT PROPERTIES

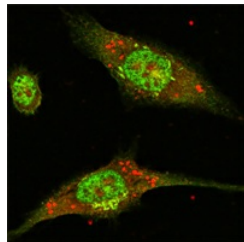
Clonality	Monoclonal
Clone ID	4C11
Concentration	
Conjugation	Unconjugated
Purification	The antibody was isolated from ascitic fluid by immunoaffinity chromatography using antigens coupled to agarose beads.
Dilution Range	WB 1:500-1:2000 IHC 1:200-1:1000 IF 1:200-1:1000 ELISA 1:10000
Formulation	Ascitic fluid, 0.03% Sodium Azide, 0.5% BSA, 50% Glycerol.
Isotype	IgG2a
Storage Instruction	Store at -20°C for up to 1 year from the date of receipt, and avoid repeat freeze-thaw cycles.

TARGET INFORMATION

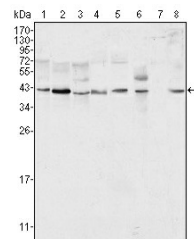
Gene ID	5594
Gene Symbol	MAPK1
Uniprot ID	MK01_HUMAN
Immunogen	Purified recombinant fragment of human ERK 2 expressed in E.coli.
Immunogen Region	
Specificity	MAPK1 monoclonal antibody (Mitogen-Activated Protein Kinase 1) binds to endogenous Mitogen-Activated Protein Kinase 1.
Immunogen Sequence	



Immunohistochemistry analysis of paraffin-embedded human lung carcinoma (left) and breast carcinoma (right) showing cytoplasmic localization with DAB staining using ERK 2 monoclonal antibody.



Immunofluorescence analysis of Eca-109 cells using ERK 2 monoclonal antibody (green).



Western blot analysis using ERK 2 monoclonal antibody against HeLa (1), NIH/3T3 (2), MCF-7 (3), HEK293 (4), Jurkat (5), A549 (6), NTERA-2 (7) and SMMC-7721 (8) cell lysate.

This product is suitable for in-vitro studies under the RESEARCH USE ONLY [RUO] licence. This product must not be used as for diagnostic or other medical purposes.
St John's Laboratory Ltd, Knowledge Dock Business Centre, University Way, London, E16 2RD | Tel: 0208 223 3081