

## Anti-ERBB3 antibody (1175-1275) [3F10F6] (STJ98042)

STJ98042

### GENERAL INFORMATION

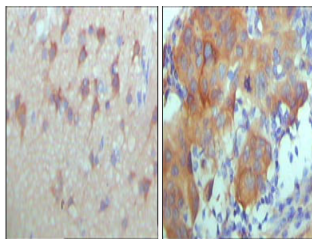
<b>Product Type</b>	Primary antibodies
<b>Short Description</b>	Mouse monoclonal antibody anti-Receptor Tyrosine-Protein Kinase Erbb-3 (1175-1275) is suitable for use in Western Blot, Immunohistochemistry, Immunofluorescence and ELISA research applications.
<b>Applications</b>	WB, IHC-P, IF-P, ELISA
<b>Host/Source</b>	Mouse
<b>Reactivity</b>	Human

### PRODUCT PROPERTIES

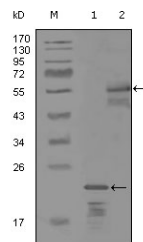
<b>Clonality</b>	Monoclonal
<b>Clone ID</b>	3F10F6
<b>Concentration</b>	
<b>Conjugation</b>	Unconjugated
<b>Purification</b>	The antibody was isolated from ascitic fluid by immunoaffinity chromatography using antigens coupled to agarose beads.
<b>Dilution Range</b>	WB 1:500-1:2000 IHC 1:200-1:1000 ELISA 1:10000
<b>Formulation</b>	Ascitic fluid, 0.03% Sodium Azide, 0.5% BSA, 50% Glycerol.
<b>Isotype</b>	IgG1
<b>Storage Instruction</b>	Store at -20°C for up to 1 year from the date of receipt, and avoid repeat freeze-thaw cycles.

### TARGET INFORMATION

<b>Gene ID</b>	2065
<b>Gene Symbol</b>	ERBB3
<b>Uniprot ID</b>	ERBB3_HUMAN
<b>Immunogen</b>	Purified recombinant fragment of ErbB-3 (aa1175-1275) expressed in E.coli.
<b>Immunogen Region</b>	1175-1275
<b>Specificity</b>	ERBB3 monoclonal antibody (Receptor Tyrosine-Protein Kinase Erbb-3) binds to endogenous Receptor Tyrosine-Protein Kinase Erbb-3 at the amino acid region 1175-1275.
<b>Immunogen Sequence</b>	



Immunohistochemistry analysis of paraffin-embedded human cerebra (left) and breast carcinoma tissue (right) showing cytoplasmic and membrane location with DAB staining using ErbB-3 monoclonal antibody.



Western blot analysis using ErbB-3 monoclonal antibody against truncated Trx-ErbB-3 recombinant protein (1) and MBP-ErbB-3 (aa1175-1275) recombinant protein (2).

This product is suitable for in-vitro studies under the RESEARCH USE ONLY [RUO] licence. This product must not be used as for diagnostic or other medical purposes.  
St John's Laboratory Ltd, Knowledge Dock Business Centre, University Way, London, E16 2RD | Tel: 0208 223 3081