

Anti-EPHB6 antibody (601-750) [2A6B9] (STJ98038)

STJ98038

GENERAL INFORMATION

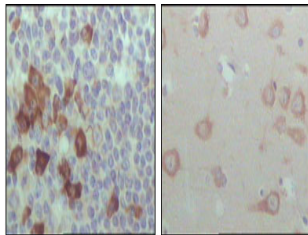
Product Type	Primary antibodies
Short Description	Mouse monoclonal antibody anti-Ephrin Type-B Receptor 6 (601-750) is suitable for use in Western Blot, Immunohistochemistry, Immunofluorescence and ELISA research applications.
Applications	WB, IHC-P, IF-P, ELISA
Host/Source	Mouse
Reactivity	Human

PRODUCT PROPERTIES

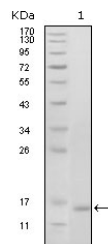
Clonality	Monoclonal
Clone ID	2A6B9
Concentration	
Conjugation	Unconjugated
Purification	The antibody was isolated from ascitic fluid by immunoaffinity chromatography using antigens coupled to agarose beads.
Dilution Range	WB 1:500-1:2000 IHC 1:200-1:1000 ELISA 1:10000
Formulation	Ascitic fluid, 0.03% Sodium Azide, 0.5% BSA, 50% Glycerol.
Isotype	IgG1
Storage Instruction	Store at -20°C for up to 1 year from the date of receipt, and avoid repeat freeze-thaw cycles.

TARGET INFORMATION

Gene ID	2051
Gene Symbol	EPHB6
Uniprot ID	EPHB6_HUMAN
Immunogen	Purified recombinant fragment of EphB6 (aa601-750) expressed in E.coli.
Immunogen Region	601-750
Specificity	EPHB6 monoclonal antibody (Ephrin Type-B Receptor 6) binds to endogenous Ephrin Type-B Receptor 6 at the amino acid region 601-750.
Immunogen Sequence	



Immunohistochemistry analysis of paraffin-embedded human lymph node (left) and brain (right), showing cytoplasmic localization with DAB staining using EphB6 monoclonal antibody.



Western blot analysis using EphB6 monoclonal antibody against truncated EphB6 recombinant protein (1).