

Anti-EPHB6 antibody [8E7H12] (STJ98037)

STJ98037

GENERAL INFORMATION

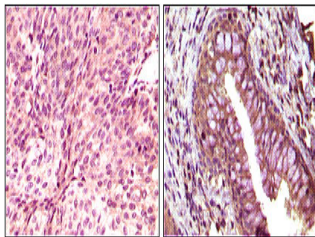
Product Type	Primary antibodies
Short Description	Mouse monoclonal antibody anti-Ephrin Type-B Receptor 6 is suitable for use in Western Blot, Immunohistochemistry, Immunofluorescence and ELISA research applications.
Applications	WB, IHC-P, IF-P, ELISA
Host/Source	Mouse
Reactivity	Human

PRODUCT PROPERTIES

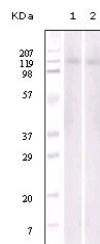
Clonality	Monoclonal
Clone ID	8E7H12
Concentration	1 mg/mL
Conjugation	Unconjugated
Purification	The antibody was isolated from ascitic fluid by immunoaffinity chromatography using antigens coupled to agarose beads.
Dilution Range	WB 1:500-1:2000 IHC 1:200-1:1000 ELISA 1:10000
Formulation	PBS, 0.03% Sodium Azide.
Isotype	IgG1
Storage Instruction	Store at -20°C for up to 1 year from the date of receipt, and avoid repeat freeze-thaw cycles.

TARGET INFORMATION

Gene ID	2051
Gene Symbol	EPHB6
Uniprot ID	EPHB6_HUMAN
Immunogen	Purified recombinant fragment of EphB6 expressed in E.coli.
Immunogen Region	
Specificity	EPHB6 monoclonal antibody (Ephrin Type-B Receptor 6) binds to endogenous Ephrin Type-B Receptor 6.
Immunogen Sequence	



Immunohistochemistry analysis of paraffin-embedded human bladder carcinoma (left) and return carcinoma (right) tissue, showing cytoplasmic localization with DAB staining using EphB6 monoclonal antibody.



Western blot analysis using EphB6 monoclonal antibody against Jurkat (1) and NIH/3T3 (2) cell lysate.

This product is suitable for in-vitro studies under the RESEARCH USE ONLY [RUO] licence. This product must not be used as for diagnostic or other medical purposes.
St John's Laboratory Ltd, Knowledge Dock Business Centre, University Way, London, E16 2RD | Tel: 0208 223 3081