

Anti-EPHB3 antibody (39-212) [4A122D1] (STJ98033)

STJ98033

GENERAL INFORMATION

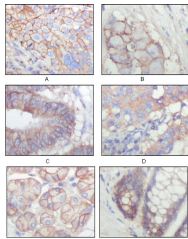
Product Type	Primary antibodies
Short Description	Mouse monoclonal antibody anti-Ephrin Type-B Receptor 3 (39-212) is suitable for use in Western Blot, Immunohistochemistry, Immunofluorescence and ELISA research applications.
Applications	WB, IHC-P, IF-P, ELISA
Host/Source	Mouse
Reactivity	Human

PRODUCT PROPERTIES

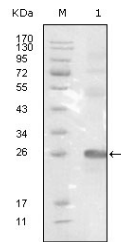
Clonality	Monoclonal
Clone ID	4A122D1
Concentration	
Conjugation	Unconjugated
Purification	The antibody was isolated from ascitic fluid by immunoaffinity chromatography using antigens coupled to agarose beads.
Dilution Range	WB 1:500-1:2000 IHC 1:200-1:1000 ELISA 1:10000
Formulation	Ascitic fluid, 0.03% Sodium Azide, 0.5% BSA, 50% Glycerol.
Isotype	IgG2a
Storage Instruction	Store at -20°C for up to 1 year from the date of receipt, and avoid repeat freeze-thaw cycles.

TARGET INFORMATION

Gene ID	2049
Gene Symbol	EPHB3
Uniprot ID	EPHB3_HUMAN
Immunogen	Purified recombinant fragment of EphB3 (aa39-212) expressed in E.coli.
Immunogen Region	39-212
Specificity	EPHB3 monoclonal antibody (Ephrin Type-B Receptor 3) binds to endogenous Ephrin Type-B Receptor 3 at the amino acid region 39-212.
Immunogen Sequence	



Immunohistochemistry analysis of paraffin-embedded human lung squamous cell carcinoma (A), lung adenocarcinoma (B), colon carcinoma (C), breast carcinoma (D), normal sublingual gland (E), normal rectal (F), showing membrane localization with DAB staining



Western blot analysis using EphB3 monoclonal antibody against truncated EphB3-His recombinant protein.

This product is suitable for in-vitro studies under the RESEARCH USE ONLY [RUO] licence. This product must not be used as for diagnostic or other medical purposes.
St John's Laboratory Ltd, Knowledge Dock Business Centre, University Way, London, E16 2RD | Tel: 0208 223 3081