

## Anti-EPHB2 antibody (17-200) [2D12C6] (STJ98032)

STJ98032

### GENERAL INFORMATION

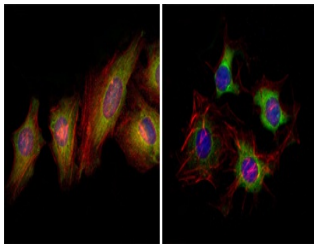
<b>Product Type</b>	Primary antibodies
<b>Short Description</b>	Mouse monoclonal antibody anti-Ephrin Type-B Receptor 2 (17-200) is suitable for use in Western Blot, Immunofluorescence, Immunocytochemistry and ELISA research applications.
<b>Applications</b>	WB, IF, ICC, ELISA
<b>Host/Source</b>	Mouse
<b>Reactivity</b>	Human

### PRODUCT PROPERTIES

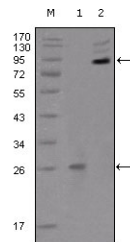
<b>Clonality</b>	Monoclonal
<b>Clone ID</b>	2D12C6
<b>Concentration</b>	
<b>Conjugation</b>	Unconjugated
<b>Purification</b>	The antibody was isolated from ascitic fluid by immunoaffinity chromatography using antigens coupled to agarose beads.
<b>Dilution Range</b>	WB 1:500-1:2000 IF 1:200-1:1000 ELISA 1:10000
<b>Formulation</b>	Ascitic fluid, 0.03% Sodium Azide, 0.5% BSA, 50% Glycerol.
<b>Isotype</b>	IgG2b
<b>Storage Instruction</b>	Store at -20°C for up to 1 year from the date of receipt, and avoid repeat freeze-thaw cycles.

### TARGET INFORMATION

<b>Gene ID</b>	2048
<b>Gene Symbol</b>	EPHB2
<b>Uniprot ID</b>	EPHB2_HUMAN
<b>Immunogen</b>	Purified recombinant fragment of EphB2 (aa17-200) expressed in E.coli.
<b>Immunogen Region</b>	17-200
<b>Specificity</b>	EPHB2 monoclonal antibody (Ephrin Type-B Receptor 2) binds to endogenous Ephrin Type-B Receptor 2 at the amino acid region 17-200.
<b>Immunogen Sequence</b>	



Immunofluorescence analysis of HeLa (left) and HepG2 (right) cells using EphB2 monoclonal antibody (green). Red: Actin filaments have been labeled with DY-554 phalloidin. Blue: DRAQS fluorescent DNA dye.



Western blot analysis using EphB2 monoclonal antibody against truncated EphB2 recombinant protein (1) and extracellular EphB2 (aa19-476) -HisGFPc transfected CHO-K1 cell lysate (2).

This product is suitable for in-vitro studies under the RESEARCH USE ONLY [RUO] licence. This product must not be used as for diagnostic or other medical purposes.  
St John's Laboratory Ltd, Knowledge Dock Business Centre, University Way, London, E16 2RD | Tel: 0208 223 3081