

Anti-EPHB1 antibody (19-133) [5F10A4] (STJ98031)

STJ98031

GENERAL INFORMATION

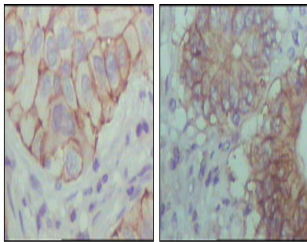
Product Type	Primary antibodies
Short Description	Mouse monoclonal antibody anti-Ephrin Type-B Receptor 1 (19-133) is suitable for use in Western Blot, Immunohistochemistry, Immunofluorescence and ELISA research applications.
Applications	WB, IHC-P, IF-P, ELISA
Host/Source	Mouse
Reactivity	Human

PRODUCT PROPERTIES

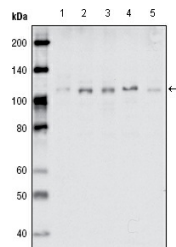
Clonality	Monoclonal
Clone ID	5F10A4
Concentration	
Conjugation	Unconjugated
Purification	The antibody was isolated from ascitic fluid by immunoaffinity chromatography using antigens coupled to agarose beads.
Dilution Range	WB 1:500-1:2000 IHC 1:200-1:1000 ELISA 1:10000
Formulation	Ascitic fluid, 0.03% Sodium Azide, 0.5% BSA, 50% Glycerol.
Isotype	IgG1
Storage Instruction	Store at -20°C for up to 1 year from the date of receipt, and avoid repeat freeze-thaw cycles.

TARGET INFORMATION

Gene ID	2047
Gene Symbol	EPHB1
Uniprot ID	EPHB1_HUMAN
Immunogen	Purified recombinant fragment of EphB1 (aa19-133) expressed in E.coli.
Immunogen Region	19-133
Specificity	EPHB1 monoclonal antibody (Ephrin Type-B Receptor 1) binds to endogenous Ephrin Type-B Receptor 1 at the amino acid region 19-133.
Immunogen Sequence	



Immunohistochemistry analysis of paraffin-embedded human lung cancer (left) and colon cancer (right) showing cytoplasmic localization with DAB staining using EphB1 monoclonal antibody.



Western blot analysis using EphB1 monoclonal antibody against MDA-MB-468 (1), MDA-MB-453 (2), MCF-7 (3), T47D (4) and SKBR-3 (5) cell lysate.