

Anti-EPHA7 antibody (27-210) [6C8G7] (STJ98029)

STJ98029

GENERAL INFORMATION

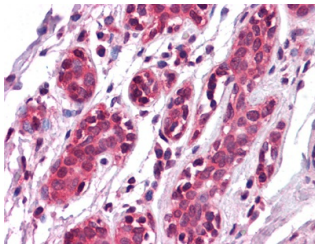
Product Type	Primary antibodies
Short Description	Mouse monoclonal antibody anti-Ephrin Type-A Receptor 7 (27-210) is suitable for use in Western Blot, Immunohistochemistry, Immunofluorescence and ELISA research applications.
Applications	WB, IHC-P, IF-P, ELISA
Host/Source	Mouse
Reactivity	Human

PRODUCT PROPERTIES

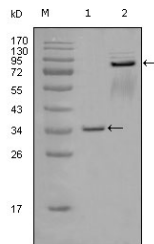
Clonality	Monoclonal
Clone ID	6C8G7
Concentration	
Conjugation	Unconjugated
Purification	The antibody was isolated from ascitic fluid by immunoaffinity chromatography using antigens coupled to agarose beads.
Dilution Range	WB 1:500-1:2000 IHC 1:200-1:1000 ELISA 1:10000
Formulation	Ascitic fluid, 0.03% Sodium Azide, 0.5% BSA, 50% Glycerol.
Isotype	IgG2b
Storage Instruction	Store at -20°C for up to 1 year from the date of receipt, and avoid repeat freeze-thaw cycles.

TARGET INFORMATION

Gene ID	2045
Gene Symbol	EPHA7
Uniprot ID	EPHA7_HUMAN
Immunogen	Purified recombinant fragment of EphA7 (aa27-210) expressed in E.coli.
Immunogen Region	27-210
Specificity	EPHA7 monoclonal antibody (Ephrin Type-A Receptor 7) binds to endogenous Ephrin Type-A Receptor 7 at the amino acid region 27-210.
Immunogen Sequence	



Immunohistochemistry analysis of paraffin-embedded human Breast tissues with AEC staining using EphA7 monoclonal antibody.



Western blot analysis using EphA7 monoclonal antibody against truncated GST-EphA7 recombinant protein (1) and truncated EphA7 (aa25-556) -hlgGfC transfected CHO K1 cell lysate (2).