

Anti-EPHA6 antibody (695-795) [3D5B10] (STJ98028)

STJ98028

GENERAL INFORMATION

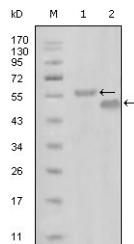
Product Type	Primary antibodies
Short Description	Mouse monoclonal antibody anti-Ephrin Type-A Receptor 6 (695-795) is suitable for use in Western Blot and ELISA research applications.
Applications	WB, ELISA
Host/Source	Mouse
Reactivity	Human

PRODUCT PROPERTIES

Clonality	Monoclonal
Clone ID	3D5B10
Concentration	
Conjugation	Unconjugated
Purification	The antibody was isolated from ascitic fluid by immunoaffinity chromatography using antigens coupled to agarose beads.
Dilution Range	WB 1:500-1:2000 ELISA 1:10000
Formulation	Ascitic fluid, 0.03% Sodium Azide, 0.5% BSA, 50% Glycerol.
Isotype	IgG1
Storage Instruction	Store at -20°C for up to 1 year from the date of receipt, and avoid repeat freeze-thaw cycles.

TARGET INFORMATION

Gene ID	285220
Gene Symbol	EPHA6
Uniprot ID	EPHA6_HUMAN
Immunogen	Purified recombinant fragment of EphA6 (aa695-795) expressed in E.coli.
Immunogen Region	695-795
Specificity	EPHA6 monoclonal antibody (Ephrin Type-A Receptor 6) binds to endogenous Ephrin Type-A Receptor 6 at the amino acid region 695-795.
Immunogen Sequence	



Western blot analysis using EPHA6 monoclonal antibody against truncated MBP-EPHA6 recombinant protein (1) and truncated GST-EPHA6 (aa695-795) recombinant protein (2).

This product is suitable for in-vitro studies under the RESEARCH USE ONLY [RUO] licence. This product must not be used as for diagnostic or other medical purposes.
St John's Laboratory Ltd, Knowledge Dock Business Centre, University Way, London, E16 2RD | Tel: 0208 223 3081