

Anti-EPHA10 antibody [2E8] (STJ98023)

STJ98023

GENERAL INFORMATION

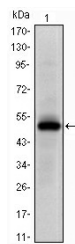
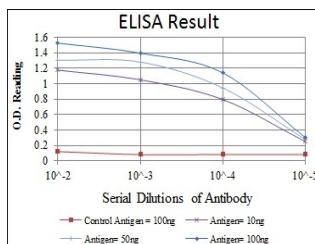
Product Type	Primary antibodies
Short Description	Mouse monoclonal antibody anti-Ephrin Type-A Receptor 10 is suitable for use in Western Blot and ELISA research applications.
Applications	WB, ELISA
Host/Source	Mouse
Reactivity	Human

PRODUCT PROPERTIES

Clonality	Monoclonal
Clone ID	2E8
Concentration	
Conjugation	Unconjugated
Purification	The antibody was isolated from ascitic fluid by immunoaffinity chromatography using antigens coupled to agarose beads.
Dilution Range	WB 1:500-1:2000 ELISA 1:10000
Formulation	Ascitic fluid, 0.03% Sodium Azide, 0.5% BSA, 50% Glycerol.
Isotype	IgG2a
Storage Instruction	Store at -20°C for up to 1 year from the date of receipt, and avoid repeat freeze-thaw cycles.

TARGET INFORMATION

Gene ID	284656
Gene Symbol	EPHA10
Uniprot ID	EPHAA_HUMAN
Immunogen	Purified recombinant fragment of human EphA10 expressed in E.coli.
Immunogen Region	
Specificity	EPHA10 monoclonal antibody (Ephrin Type-A Receptor 10) binds to endogenous Ephrin Type-A Receptor 10.
Immunogen Sequence	



Western blot analysis using EphA10 monoclonal antibody against human EphA10 (AA: 34-295) recombinant protein.

This product is suitable for in-vitro studies under the RESEARCH USE ONLY [RUO] licence. This product must not be used as for diagnostic or other medical purposes.
St John's Laboratory Ltd, Knowledge Dock Business Centre, University Way, London, E16 2RD | Tel: 0208 223 3081