

Anti-EPHA1 antibody [5D2] (STJ98022)

STJ98022

GENERAL INFORMATION

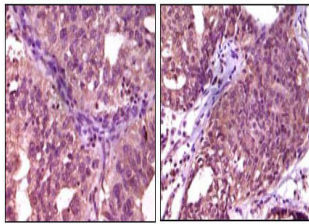
Product Type	Primary antibodies
Short Description	Mouse monoclonal antibody anti-Ephrin Type-A Receptor 1 is suitable for use in Western Blot, Immunohistochemistry, Immunofluorescence and ELISA research applications.
Applications	WB, IHC-P, IF-P, ELISA
Host/Source	Mouse
Reactivity	Human

PRODUCT PROPERTIES

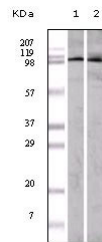
Clonality	Monoclonal
Clone ID	5D2
Concentration	1 mg/mL
Conjugation	Unconjugated
Purification	The antibody was isolated from ascitic fluid by immunoaffinity chromatography using antigens coupled to agarose beads.
Dilution Range	WB 1:500-1:2000 IHC 1:200-1:1000 ELISA 1:10000
Formulation	PBS, 0.03% Sodium Azide.
Isotype	IgG1
Storage Instruction	Store at -20°C for up to 1 year from the date of receipt, and avoid repeat freeze-thaw cycles.

TARGET INFORMATION

Gene ID	2041
Gene Symbol	EPHA1
Uniprot ID	EPHA1_HUMAN
Immunogen	Purified recombinant fragment of EphA1 expressed in E.coli.
Immunogen Region	
Specificity	EPHA1 monoclonal antibody (Ephrin Type-A Receptor 1) binds to endogenous Ephrin Type-A Receptor 1.
Immunogen Sequence	



Immunohistochemistry analysis of paraffin-embedded human ovary carcinoma (left) and breast carcinoma (right), showing cytoplasmic localization with DAB staining using EphA1 monoclonal antibody.



Western blot analysis using EphA1 monoclonal antibody against A549 (1) and HeLa (2) cell lysate.

This product is suitable for in-vitro studies under the RESEARCH USE ONLY [RUO] licence. This product must not be used as for diagnostic or other medical purposes.
St John's Laboratory Ltd, Knowledge Dock Business Centre, University Way, London, E16 2RD | Tel: 0208 223 3081