

Anti-EPCAM antibody [7E11] (STJ98021)

STJ98021

GENERAL INFORMATION

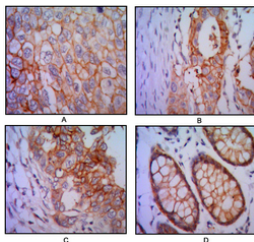
Product Type	Primary antibodies
Short Description	Mouse monoclonal antibody anti-Epithelial Cell Adhesion Molecule is suitable for use in Western Blot, Immunohistochemistry, Immunofluorescence and ELISA research applications.
Applications	WB, IHC-P, IF-P, ELISA
Host/Source	Mouse
Reactivity	Human

PRODUCT PROPERTIES

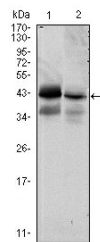
Clonality	Monoclonal
Clone ID	7E11
Concentration	
Conjugation	Unconjugated
Purification	The antibody was isolated from ascitic fluid by immunoaffinity chromatography using antigens coupled to agarose beads.
Dilution Range	WB 1:500-1:2000 IHC 1:200-1:1000 ELISA 1:10000
Formulation	Ascitic fluid, 0.03% Sodium Azide, 0.5% BSA, 50% Glycerol.
Isotype	IgG1
Storage Instruction	Store at -20°C for up to 1 year from the date of receipt, and avoid repeat freeze-thaw cycles.

TARGET INFORMATION

Gene ID	4072
Gene Symbol	EPCAM
Uniprot ID	EPCAM_HUMAN
Immunogen	Purified recombinant fragment of human EP-CAM expressed in E.coli.
Immunogen Region	
Specificity	EPCAM monoclonal antibody (Epithelial Cell Adhesion Molecule) binds to endogenous Epithelial Cell Adhesion Molecule.
Immunogen Sequence	



Immunohistochemistry analysis of paraffin-embedded human lung cancer (A), colon cancer (B), breast cancer (C) and rectal cancer (D) with DAB staining using EP-CAM monoclonal antibody.



Western blot analysis using EP-CAM monoclonal antibody against HTC116 (1) and T47D (2) cell lysate.