

Anti-ELK1 antibody [7E10D5/7E10E8] (STJ98018)

STJ98018

GENERAL INFORMATION

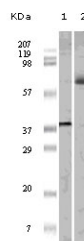
Product Type	Primary antibodies
Short Description	Mouse monoclonal antibody anti-Ets Domain-Containing Protein Elk-1 is suitable for use in Western Blot and ELISA research applications.
Applications	WB, ELISA
Host/Source	Mouse
Reactivity	Human

PRODUCT PROPERTIES

Clonality	Monoclonal
Clone ID	7E10D5/7E10E8
Concentration	
Conjugation	Unconjugated
Purification	The antibody was isolated from ascitic fluid by immunoaffinity chromatography using antigens coupled to agarose beads.
Dilution Range	WB 1:500-1:2000 ELISA 1:10000
Formulation	Ascitic fluid, 0.03% Sodium Azide, 0.5% BSA, 50% Glycerol.
Isotype	IgG1
Storage Instruction	Store at -20°C for up to 1 year from the date of receipt, and avoid repeat freeze-thaw cycles.

TARGET INFORMATION

Gene ID	2002
Gene Symbol	ELK1
Uniprot ID	ELK1_HUMAN
Immunogen	Purified recombinant fragment of Elk1 expressed in E.coli.
Immunogen Region	
Specificity	ELK1 monoclonal antibody (Ets Domain-Containing Protein Elk-1) binds to endogenous Ets Domain-Containing Protein Elk-1.
Immunogen Sequence	



Western blot analysis using Elk1 monoclonal antibody against truncated ELK1 recombinant protein (1) and K562 cell lysate (2).

This product is suitable for in-vitro studies under the RESEARCH USE ONLY [RUO] licence. This product must not be used as for diagnostic or other medical purposes.
St John's Laboratory Ltd, Knowledge Dock Business Centre, University Way, London, E16 2RD | Tel: 0208 223 3081