

## Anti-EGR1 antibody (282-433) [8A6] (STJ98014)

STJ98014

### GENERAL INFORMATION

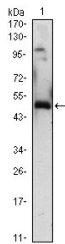
|                          |   |
|--------------------------|---|
| <b>Product Type</b>      | Primary antibodies  |
| <b>Short Description</b> | Mouse monoclonal antibody anti-Early Growth Response Protein 1 (282-433) is suitable for use in Western Blot and ELISA research applications. |
| <b>Applications</b>      | WB, ELISA   |
| <b>Host/Source</b>       | Mouse   |
| <b>Reactivity</b>        | Human   |

### PRODUCT PROPERTIES

|                       |  |
|-----------------------|--|
| <b>Clonality</b>      | Monoclonal   |
| <b>Clone ID</b>       | 8A6  |
| <b>Concentration</b>  |  |
| <b>Conjugation</b>    | Unconjugated   |
| <b>Purification</b>   | The antibody was isolated from ascitic fluid by immunoaffinity chromatography using antigens coupled to agarose beads. |
| <b>Dilution Range</b> | WB 1:500-1:2000<br>ELISA 1:10000   |
| <b>Formulation</b>    | Ascitic fluid, 0.03% Sodium Azide, 0.5% BSA, 50% Glycerol.   |
| <b>Isotype</b>        | IgG1   |
| <b>Storage</b>        | Store at -20°C for up to 1 year from the date of receipt, and avoid repeat freeze-thaw cycles.                         |
| <b>Instruction</b>    |  |

### TARGET INFORMATION

|                           |  |
|---------------------------|--|
| <b>Gene ID</b>            | 1958   |
| <b>Gene Symbol</b>        | EGR1   |
| <b>Uniprot ID</b>         | EGR1_HUMAN   |
| <b>Immunogen</b>          | Purified recombinant fragment of human Egr-1 (aa282-433) expressed in E.coli.  |
| <b>Immunogen Region</b>   | 282-433  |
| <b>Specificity</b>        | EGR1 monoclonal antibody (Early Growth Response Protein 1) binds to endogenous Early Growth Response Protein 1 at the amino acid region 282-433. |
| <b>Immunogen Sequence</b> |  |



Western blot analysis using Egr-1 monoclonal antibody against EGR1-hlgGfC transfected HEK293 (1) cell lysate.

This product is suitable for in-vitro studies under the RESEARCH USE ONLY [RUO] licence. This product must not be used as for diagnostic or other medical purposes.  
St John's Laboratory Ltd, Knowledge Dock Business Centre, University Way, London, E16 2RD | Tel: 0208 223 3081