

Anti-CDH1 antibody [7H12] (STJ98009)

STJ98009

GENERAL INFORMATION

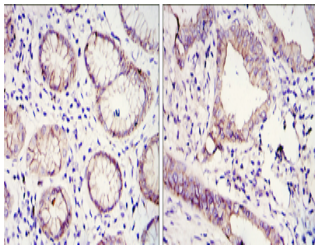
Product Type	Primary antibodies
Short Description	Mouse monoclonal antibody anti-Cadherin-1 is suitable for use in Western Blot, Immunohistochemistry, Immunofluorescence, Flow Cytometry and ELISA research applications.
Applications	WB, IHC-P, IF-P, FC, ELISA
Host/Source	Mouse
Reactivity	Human, Mouse, Monkey

PRODUCT PROPERTIES

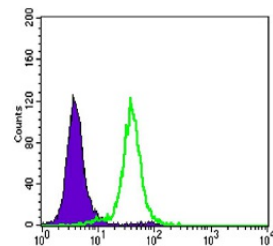
Clonality	Monoclonal
Clone ID	7H12
Concentration	
Conjugation	Unconjugated
Purification	The antibody was isolated from ascitic fluid by immunoaffinity chromatography using antigens coupled to agarose beads.
Dilution Range	WB 1:500-1:2000 IHC 1:200-1:1000 FC 1:200-1:400 ELISA 1:10000
Formulation	Ascitic fluid, 0.03% Sodium Azide, 0.5% BSA, 50% Glycerol.
Isotype	IgG1
Storage Instruction	Store at -20°C for up to 1 year from the date of receipt, and avoid repeat freeze-thaw cycles.

TARGET INFORMATION

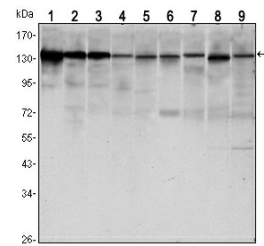
Gene ID	999
Gene Symbol	CDH1
Uniprot ID	CADH1_HUMAN
Immunogen	Purified recombinant fragment of human E-cadherin expressed in E.coli.
Immunogen Region	
Specificity	CDH1 monoclonal antibody (Cadherin-1) binds to endogenous Cadherin-1.
Immunogen Sequence	



Immunohistochemistry analysis of paraffin-embedded gastric cancer tissues (left) and lung cancer tissues (right) with DAB staining using E-cadherin monoclonal antibody.



Flow cytometric analysis of HeLa cells using E-cadherin monoclonal antibody (green) and negative control (purple).



Western blot analysis using E-cadherin monoclonal antibody against LNCAP (1), A431 (2), DU145 (3), PC-3 (4), MCF-7 (5), PC-12 (6), NIH/3T3 (7), C6 (8) and COS7 (9) cell lysate.