

Anti-DLK1 antibody [3A10] (STJ98002)

STJ98002

GENERAL INFORMATION

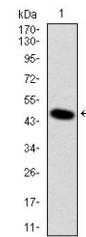
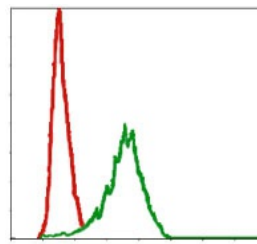
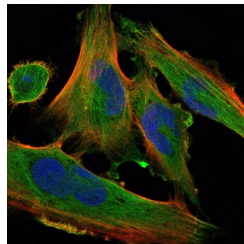
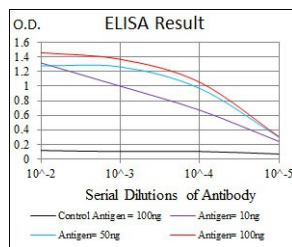
Product Type	Primary antibodies
Short Description	Mouse monoclonal antibody anti-Protein Delta Homolog 1 is suitable for use in Western Blot, Immunofluorescence, Immunocytochemistry, Flow Cytometry and ELISA research applications.
Applications	WB, IF, ICC, FC, ELISA
Host/Source	Mouse
Reactivity	Human

PRODUCT PROPERTIES

Clonality	Monoclonal
Clone ID	3A10
Concentration	
Conjugation	Unconjugated
Purification	The antibody was isolated from ascitic fluid by immunoaffinity chromatography using antigens coupled to agarose beads.
Dilution Range	WB 1:500-1:2000 IF 1:200-1:1000 FC 1:200-1:400 ELISA 1:10000
Formulation	Ascitic fluid, 0.03% Sodium Azide, 0.5% BSA, 50% Glycerol.
Isotype	IgG1
Storage Instruction	Store at -20°C for up to 1 year from the date of receipt, and avoid repeat freeze-thaw cycles.

TARGET INFORMATION

Gene ID	8788
Gene Symbol	DLK1
Uniprot ID	DLK1_HUMAN
Immunogen	Purified recombinant fragment of human DLK1 expressed in E.coli.
Immunogen Region	
Specificity	DLK1 monoclonal antibody (Protein Delta Homolog 1) binds to endogenous Protein Delta Homolog 1.
Immunogen Sequence	



This product is suitable for in-vitro studies under the RESEARCH USE ONLY [RUO] licence. This product must not be used as for diagnostic or other medical purposes.
St John's Laboratory Ltd, Knowledge Dock Business Centre, University Way, London, E16 2RD | Tel: 0208 223 3081