

Anti-KRT7 antibody [5D12] (STJ97991)

STJ97991

GENERAL INFORMATION

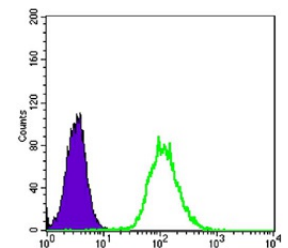
Product Type	Primary antibodies
Short Description	Mouse monoclonal antibody anti-Keratin-Type II Cytoskeletal 7 is suitable for use in Western Blot, Flow Cytometry and ELISA research applications.
Applications	WB, FC, ELISA
Host/Source	Mouse
Reactivity	Human

PRODUCT PROPERTIES

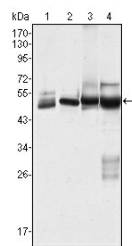
Clonality	Monoclonal
Clone ID	5D12
Concentration	
Conjugation	Unconjugated
Purification	The antibody was isolated from ascitic fluid by immunoaffinity chromatography using antigens coupled to agarose beads.
Dilution Range	WB 1:500-1:2000 FC 1:200-1:400 ELISA 1:10000
Formulation	Ascitic fluid, 0.03% Sodium Azide, 0.5% BSA, 50% Glycerol.
Isotype	IgG1
Storage Instruction	Store at -20°C for up to 1 year from the date of receipt, and avoid repeat freeze-thaw cycles.

TARGET INFORMATION

Gene ID	3855
Gene Symbol	KRT7
Uniprot ID	K2C7_HUMAN
Immunogen	Purified recombinant fragment of human Cytokeratin 7 expressed in E.coli.
Region	
Specificity	KRT7 monoclonal antibody (Keratin-Type II Cytoskeletal 7) binds to endogenous Keratin-Type II Cytoskeletal 7.
Immunogen Sequence	



Flow cytometric analysis of HeLa cells using Cytokeratin 7 monoclonal antibody (green) and negative control (purple).



Western blot analysis using Cytokeratin 7 monoclonal antibody against HeLa (1), MCF-7 (2), A431 (3) and A549 (4) cell lysate.

This product is suitable for in-vitro studies under the RESEARCH USE ONLY [RUO] licence. This product must not be used as for diagnostic or other medical purposes.
St John's Laboratory Ltd, Knowledge Dock Business Centre, University Way, London, E16 2RD | Tel: 0208 223 3081