

Anti-KRT18 antibody (391-483) [4D11E4] (STJ97984)

STJ97984

GENERAL INFORMATION

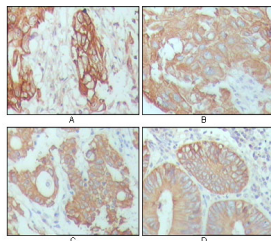
Product Type	Primary antibodies
Short Description	Mouse monoclonal antibody anti-Keratin-Type I Cytoskeletal 18 (391-483) is suitable for use in Western Blot, Immunohistochemistry, Immunofluorescence and ELISA research applications.
Applications	WB, IHC-P, IF-P, ELISA
Host/Source	Mouse
Reactivity	Human

PRODUCT PROPERTIES

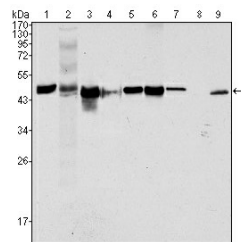
Clonality	Monoclonal
Clone ID	4D11E4
Concentration	
Conjugation	Unconjugated
Purification	The antibody was isolated from ascitic fluid by immunoaffinity chromatography using antigens coupled to agarose beads.
Dilution Range	WB 1:500-1:2000 IHC 1:200-1:1000 ELISA 1:10000
Formulation	Ascitic fluid, 0.03% Sodium Azide, 0.5% BSA, 50% Glycerol.
Isotype	IgG2b
Storage Instruction	Store at -20°C for up to 1 year from the date of receipt, and avoid repeat freeze-thaw cycles.

TARGET INFORMATION

Gene ID	3875
Gene Symbol	KRT18
Uniprot ID	K1C18_HUMAN
Immunogen	Purified recombinant fragment of human Cytokeratin 18 (aa391-483) expressed in E.coli.
Immunogen Region	391-483
Specificity	KRT18 monoclonal antibody (Keratin-Type I Cytoskeletal 18) binds to endogenous Keratin-Type I Cytoskeletal 18 at the amino acid region 391-483.
Immunogen Sequence	



Immunohistochemistry analysis of paraffin-embedded human breast carcinoma (A), hepatocarcinoma (B), stomach cancer (C) and colon cancer tissue (D), showing cytoplasmic location with DAB staining using Cytokeratin 18 monoclonal antibody.



Western blot analysis using Cytokeratin 18 monoclonal antibody against HeLa (1), NIH/3T3 (2), A549 (3), Jurkat (4), MCF-7 (5), HepG2 (6), A431 (7), HEK293 (8) and K562 (9) cell lysate.

This product is suitable for in-vitro studies under the RESEARCH USE ONLY [RUO] licence. This product must not be used as for diagnostic or other medical purposes.
St John's Laboratory Ltd, Knowledge Dock Business Centre, University Way, London, E16 2RD | Tel: 0208 223 3081