

Anti-CCNB1 antibody [5G6] (STJ97977)

STJ97977

GENERAL INFORMATION

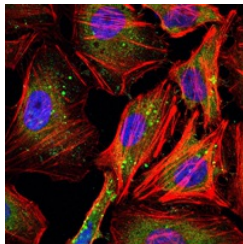
Product Type	Primary antibodies
Short Description	Mouse monoclonal antibody anti-G2/Mitotic-Specific Cyclin-B1 is suitable for use in Western Blot, Immunofluorescence, Immunocytochemistry, Flow Cytometry and ELISA research applications.
Applications	WB, IF, ICC, FC, ELISA
Host/Source	Mouse
Reactivity	Human, Rat

PRODUCT PROPERTIES

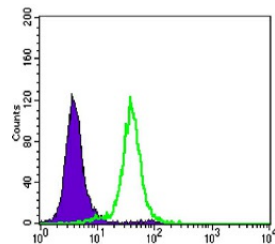
Clonality	Monoclonal
Clone ID	5G6
Concentration	
Conjugation	Unconjugated
Purification	The antibody was isolated from ascitic fluid by immunoaffinity chromatography using antigens coupled to agarose beads.
Dilution Range	WB 1:500-1:2000 IF 1:200-1:1000 FC 1:200-1:400 ELISA 1:10000
Formulation	Ascitic fluid, 0.03% Sodium Azide, 0.5% BSA, 50% Glycerol.
Isotype	IgG1
Storage Instruction	Store at -20°C for up to 1 year from the date of receipt, and avoid repeat freeze-thaw cycles.

TARGET INFORMATION

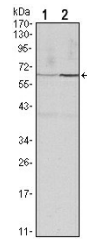
Gene ID	891
Gene Symbol	CCNB1
Uniprot ID	CCNB1_HUMAN
Immunogen	Purified recombinant fragment of human Cyclin B1 expressed in E.coli.
Immunogen Region	
Specificity	CCNB1 monoclonal antibody (G2/Mitotic-Specific Cyclin-B1) binds to endogenous G2/Mitotic-Specific Cyclin-B1.
Immunogen Sequence	



Immunofluorescence analysis of HeLa cells using Cyclin B1 monoclonal antibody (green). Blue: DRAQ5 fluorescent DNA dye. Red: Actin filaments have been labeled with Alexa Fluor-555 phalloidin.



Flow cytometric analysis of HeLa cells using Cyclin B1 monoclonal antibody (green) and negative control (purple).



Western blot analysis using Cyclin B1 monoclonal antibody against HeLa (1) and PC-12 (2) cell lysate.

This product is suitable for in-vitro studies under the RESEARCH USE ONLY [RUO] licence. This product must not be used as for diagnostic or other medical purposes.
St John's Laboratory Ltd, Knowledge Dock Business Centre, University Way, London, E16 2RD | Tel: 0208 223 3081