

Anti-CCNB1 antibody [1B10] (STJ97976)

STJ97976

GENERAL INFORMATION

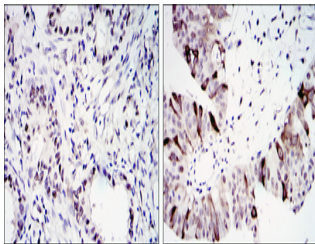
Product Type	Primary antibodies
Short Description	Mouse monoclonal antibody anti-G2/Mitotic-Specific Cyclin-B1 is suitable for use in Western Blot, Immunohistochemistry, Immunofluorescence and ELISA research applications.
Applications	WB, IHC-P, IF-P, ELISA
Host/Source	Mouse
Reactivity	Human

PRODUCT PROPERTIES

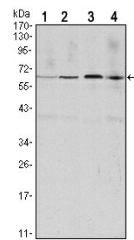
Clonality	Monoclonal
Clone ID	1B10
Concentration	
Conjugation	Unconjugated
Purification	The antibody was isolated from ascitic fluid by immunoaffinity chromatography using antigens coupled to agarose beads.
Dilution Range	WB 1:500-1:2000 IHC 1:200-1:1000 ELISA 1:10000
Formulation	Ascitic fluid, 0.03% Sodium Azide, 0.5% BSA, 50% Glycerol.
Isotype	IgG1
Storage Instruction	Store at -20°C for up to 1 year from the date of receipt, and avoid repeat freeze-thaw cycles.

TARGET INFORMATION

Gene ID	891
Gene Symbol	CCNB1
Uniprot ID	CCNB1_HUMAN
Immunogen	Purified recombinant fragment of human Cyclin B1 expressed in E.coli.
Immunogen Region	
Specificity	CCNB1 monoclonal antibody (G2/Mitotic-Specific Cyclin-B1) binds to endogenous G2/Mitotic-Specific Cyclin-B1.
Immunogen Sequence	



Immunohistochemistry analysis of paraffin-embedded lung cancer (left) and ovary tumour tissues (right) with DAB staining using Cyclin B1 monoclonal antibody.



Western blot analysis using Cyclin B1 monoclonal antibody against HeLa (1), Jurkat (2), K562 (3) and PC-12 (4) cell lysate.