

## Anti-CRYAB antibody (1-175) [1D11C6E6] (STJ97971)

STJ97971

### GENERAL INFORMATION

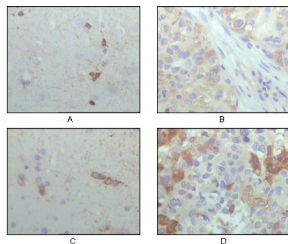
<b>Product Type</b>	Primary antibodies
<b>Short Description</b>	Mouse monoclonal antibody anti-Alpha-Crystallin B Chain (1-175) is suitable for use in Western Blot, Immunohistochemistry, Immunofluorescence and ELISA research applications.
<b>Applications</b>	WB, IHC-P, IF-P, ELISA
<b>Host/Source</b>	Mouse
<b>Reactivity</b>	Human

### PRODUCT PROPERTIES

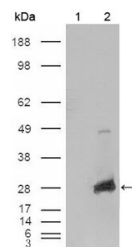
<b>Clonality</b>	Monoclonal
<b>Clone ID</b>	1D11C6E6
<b>Concentration</b>	
<b>Conjugation</b>	Unconjugated
<b>Purification</b>	The antibody was isolated from ascitic fluid by immunoaffinity chromatography using antigens coupled to agarose beads.
<b>Dilution Range</b>	WB 1:500-1:2000 IHC 1:200-1:1000 ELISA 1:10000
<b>Formulation</b>	Ascitic fluid, 0.03% Sodium Azide, 0.5% BSA, 50% Glycerol.
<b>Isotype</b>	IgG2a
<b>Storage Instruction</b>	Store at -20°C for up to 1 year from the date of receipt, and avoid repeat freeze-thaw cycles.

### TARGET INFORMATION

<b>Gene ID</b>	1410
<b>Gene Symbol</b>	CRYAB
<b>Uniprot ID</b>	CRYAB_HUMAN
<b>Immunogen</b>	Purified recombinant fragment of Crystallin-Alpha B (aa1-175) expressed in E.coli.
<b>Immunogen Region</b>	1-175
<b>Specificity</b>	CRYAB monoclonal antibody (Alpha-Crystallin B Chain) binds to endogenous Alpha-Crystallin B Chain at the amino acid region 1-175.
<b>Immunogen Sequence</b>	



Immunohistochemistry analysis of paraffin-embedded human brain hippocampus (A), lung cancer (B), brain tumor (C), breast cancer (D) showing cytoplasmic localization with DAB staining using Crystallin-Alpha B monoclonal antibody.



Western blot analysis using Crystallin-Alpha B monoclonal antibody against HEK293T cells transfected with the pCMV6-ENTRY control (1) and pCMV6-ENTRY CRYAB cDNA (2).

This product is suitable for in-vitro studies under the RESEARCH USE ONLY [RUO] licence. This product must not be used as for diagnostic or other medical purposes.  
St John's Laboratory Ltd, Knowledge Dock Business Centre, University Way, London, E16 2RD | Tel: 0208 223 3081