

Anti-CRKL antibody [5E12] (STJ97970)

STJ97970

GENERAL INFORMATION

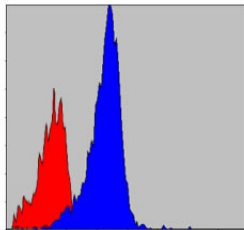
Product Type	Primary antibodies
Short Description	Mouse monoclonal antibody anti-Crk-Like Protein is suitable for use in Western Blot, Flow Cytometry and ELISA research applications.
Applications	WB, FC, ELISA
Host/Source	Mouse
Reactivity	Human

PRODUCT PROPERTIES

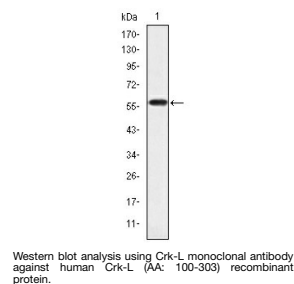
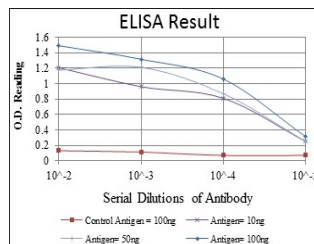
Clonality	Monoclonal
Clone ID	5E12
Concentration	
Conjugation	Unconjugated
Purification	The antibody was isolated from ascitic fluid by immunoaffinity chromatography using antigens coupled to agarose beads.
Dilution Range	WB 1:500-1:2000 FC 1:200-1:400 ELISA 1:10000
Formulation	Ascitic fluid, 0.03% Sodium Azide, 0.5% BSA, 50% Glycerol.
Isotype	IgG1
Storage Instruction	Store at -20°C for up to 1 year from the date of receipt, and avoid repeat freeze-thaw cycles.

TARGET INFORMATION

Gene ID	1399
Gene Symbol	CRKL
Uniprot ID	CRKL_HUMAN
Immunogen	Purified recombinant fragment of human Crk-L expressed in E.coli.
Immunogen Region	
Specificity	CRKL monoclonal antibody (Crk-Like Protein) binds to endogenous Crk-Like Protein.
Immunogen Sequence	



Flow cytometric analysis of NIH/3T3 cells using Crk-L monoclonal antibody (blue) and negative control (red).



Western blot analysis using Crk-L monoclonal antibody against human Crk-L (AA: 100-303) recombinant protein.

This product is suitable for in-vitro studies under the RESEARCH USE ONLY [RUO] licence. This product must not be used as for diagnostic or other medical purposes.
St John's Laboratory Ltd, Knowledge Dock Business Centre, University Way, London, E16 2RD | Tel: 0208 223 3081