

Anti-CRK antibody [3G11E8] (STJ97969)

STJ97969

GENERAL INFORMATION

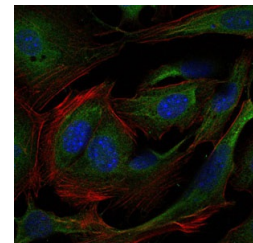
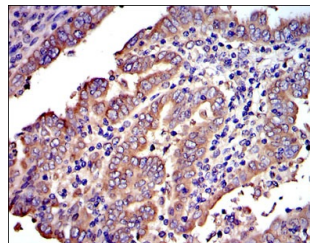
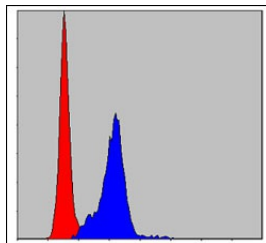
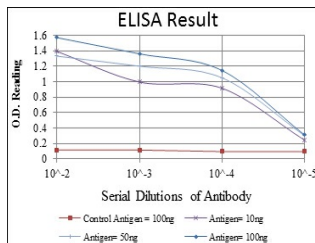
Product Type	Primary antibodies
Short Description	Mouse monoclonal antibody anti-Adapter Molecule Crk is suitable for use in Western Blot, Immunohistochemistry, Immunofluorescence, Immunocytochemistry, Flow Cytometry and ELISA research applications.
Applications	WB, IHC-P, IF, ICC, FC, ELISA
Host/Source	Mouse
Reactivity	Human

PRODUCT PROPERTIES

Clonality	Monoclonal
Clone ID	3G11E8
Concentration	
Conjugation	Unconjugated
Purification	The antibody was isolated from ascitic fluid by immunoaffinity chromatography using antigens coupled to agarose beads.
Dilution Range	WB 1:500-1:2000 IHC 1:200-1:1000 IF 1:200-1:1000 FC 1:200-1:400 ELISA 1:10000
Formulation	Ascitic fluid, 0.03% Sodium Azide, 0.5% BSA, 50% Glycerol.
Isotype	IgG2b
Storage	Store at -20°C for up to 1 year from the date of receipt, and avoid repeat freeze-thaw cycles.
Instruction	

TARGET INFORMATION

Gene ID	1398
Gene Symbol	CRK
Uniprot ID	CRK_HUMAN
Immunogen	Purified recombinant fragment of human Crk II expressed in E.coli.
Immunogen Region	
Specificity	CRK monoclonal antibody (Adapter Molecule Crk) binds to endogenous Adapter Molecule Crk.
Immunogen Sequence	



Flow cytometric analysis of HeLa cells using Crk II monoclonal antibody (blue) and negative control (red).

Immunohistochemistry analysis of paraffin-embedded intima cancer tissues with DAB staining using Crk II monoclonal antibody.

Immunofluorescence analysis of 3T3-L1 cells using Crk II monoclonal antibody (green). Blue: DRAQ5 fluorescent DNA dye. Red: Actin filaments have been labeled with Alexa Fluor-555 phalloidin.

This product is suitable for in-vitro studies under the RESEARCH USE ONLY [RUO] licence. This product must not be used as for diagnostic or other medical purposes.
St John's Laboratory Ltd, Knowledge Dock Business Centre, University Way, London, E16 2RD | Tel: 0208 223 3081