

Anti-CLOCK antibody [8F7] (STJ97961)

STJ97961

GENERAL INFORMATION

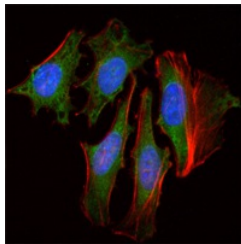
Product Type	Primary antibodies
Short Description	Mouse monoclonal antibody anti-Circadian Locomoter Output Cycles Protein Kaput is suitable for use in Western Blot, Immunofluorescence, Immunocytochemistry and ELISA research applications.
Applications	WB, IF, ICC, ELISA
Host/Source	Mouse
Reactivity	Human

PRODUCT PROPERTIES

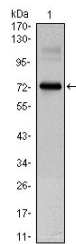
Clonality	Monoclonal
Clone ID	8F7
Concentration	
Conjugation	Unconjugated
Purification	The antibody was isolated from ascitic fluid by immunoaffinity chromatography using antigens coupled to agarose beads.
Dilution Range	WB 1:500-1:2000 IF 1:200-1:1000 ELISA 1:10000
Formulation	Ascitic fluid, 0.03% Sodium Azide, 0.5% BSA, 50% Glycerol.
Isotype	IgG1
Storage Instruction	Store at -20°C for up to 1 year from the date of receipt, and avoid repeat freeze-thaw cycles.

TARGET INFORMATION

Gene ID	9575
Gene Symbol	CLOCK
Uniprot ID	CLOCK_HUMAN
Immunogen	Purified recombinant fragment of human Clock expressed in E.coli.
Region	
Specificity	CLOCK monoclonal antibody (Circadian Locomoter Output Cycles Protein Kaput) binds to endogenous Circadian Locomoter Output Cycles Protein Kaput.
Immunogen Sequence	



Immunofluorescence analysis of HeLa cells using Clock monoclonal antibody (green). Red: Actin filaments have been labeled with Alexa Fluor-555 phalloidin. Blue: DRAQ5 fluorescent DNA dye.



Western blot analysis using Clock monoclonal antibody against CLOCK-hlgGfC transfected HEK293 cell lysate.

This product is suitable for in-vitro studies under the RESEARCH USE ONLY [RUO] licence. This product must not be used as for diagnostic or other medical purposes.
St John's Laboratory Ltd, Knowledge Dock Business Centre, University Way, London, E16 2RD | Tel: 0208 223 3081