

Anti-CIB1 antibody [5A1F5E12/5A1H7E12] (STJ97957)

STJ97957

GENERAL INFORMATION

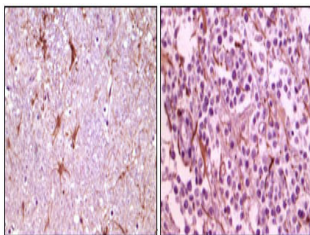
Product Type	Primary antibodies
Short Description	Mouse monoclonal antibody anti-Calcium And Integrin-Binding Protein 1 is suitable for use in Western Blot, Immunohistochemistry, Immunofluorescence and ELISA research applications.
Applications	WB, IHC-P, IF-P, ELISA
Host/Source	Mouse
Reactivity	Human

PRODUCT PROPERTIES

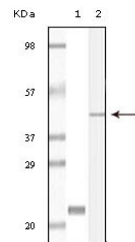
Clonality	Monoclonal
Clone ID	5A1F5E12/5A1H7E12
Concentration	
Conjugation	Unconjugated
Purification	The antibody was isolated from ascitic fluid by immunoaffinity chromatography using antigens coupled to agarose beads.
Dilution Range	WB 1:500-1:2000 IHC 1:200-1:1000 ELISA 1:10000
Formulation	Ascitic fluid, 0.03% Sodium Azide, 0.5% BSA, 50% Glycerol.
Isotype	
Storage Instruction	Store at -20°C for up to 1 year from the date of receipt, and avoid repeat freeze-thaw cycles.

TARGET INFORMATION

Gene ID	10519
Gene Symbol	CIB1
Uniprot ID	CIB1_HUMAN
Immunogen	Purified recombinant fragment of CIB1 expressed in E.coli.
Immunogen Region	
Specificity	CIB1 monoclonal antibody (Calcium And Integrin-Binding Protein 1) binds to endogenous Calcium And Integrin-Binding Protein 1.
Immunogen Sequence	



Immunohistochemistry analysis of paraffin-embedded human thalamus (left) and glioma (right) tissue, showing membrane localization with DAB staining using CIB1 monoclonal antibody.



Western blot analysis using CIB1 monoclonal antibody against truncated CIB1 recombinant protein (1) and A431 cell lysate (2).