

Anti-CHEK2 antibody (481-531) [1C12B8] (STJ97956)

STJ97956

GENERAL INFORMATION

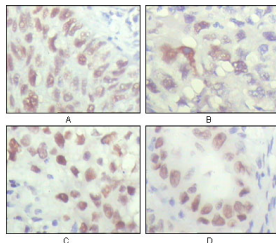
Product Type	Primary antibodies
Short Description	Mouse monoclonal antibody anti-Serine/Threonine-Protein Kinase Chk2 (481-531) is suitable for use in Western Blot, Immunohistochemistry, Immunofluorescence, Immunocytochemistry and ELISA research applications.
Applications	WB, IHC-P, IF, ICC, ELISA
Host/Source	Mouse
Reactivity	Human

PRODUCT PROPERTIES

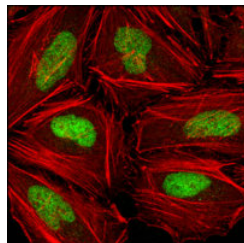
Clonality	Monoclonal
Clone ID	1C12B8
Concentration	
Conjugation	Unconjugated
Purification	The antibody was isolated from ascitic fluid by immunoaffinity chromatography using antigens coupled to agarose beads.
Dilution Range	WB 1:500-1:2000 IHC 1:200-1:1000 IF 1:200-1:1000 ELISA 1:10000
Formulation	Ascitic fluid, 0.03% Sodium Azide, 0.5% BSA, 50% Glycerol.
Isotype	IgG2b
Storage Instruction	Store at -20°C for up to 1 year from the date of receipt, and avoid repeat freeze-thaw cycles.

TARGET INFORMATION

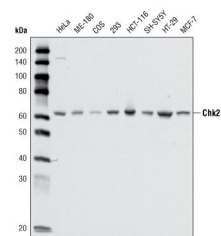
Gene ID	11200
Gene Symbol	CHEK2
Uniprot ID	CHK2_HUMAN
Immunogen	Purified recombinant fragment of human Chk2 (aa481-531) expressed in E.coli.
Immunogen Region	481-531
Specificity	CHEK2 monoclonal antibody (Serine/Threonine-Protein Kinase Chk2) binds to endogenous Serine/Threonine-Protein Kinase Chk2 at the amino acid region 481-531.
Immunogen Sequence	



Immunohistochemistry analysis of paraffin-embedded human lung carcinoma (A), liver carcinoma (B), breast carcinoma (C) and kidney carcinoma (D), showing nuclear localization with DAB staining using Chk2 monoclonal antibody.



Confocal immunofluorescence analysis of HeLa cells using Chk2 monoclonal antibody (green), showing nuclear localization. Red: Actin filaments have been labeled with DY-554 phalloidin.



Western blot analysis using Chk2 monoclonal antibody against cell lysate from various cell types.

This product is suitable for in-vitro studies under the RESEARCH USE ONLY [RUO] licence. This product must not be used as for diagnostic or other medical purposes.
St John's Laboratory Ltd, Knowledge Dock Business Centre, University Way, London, E16 2RD | Tel: 0208 223 3081