

Anti-CDC27 antibody [5C12] (STJ97945)

STJ97945

GENERAL INFORMATION

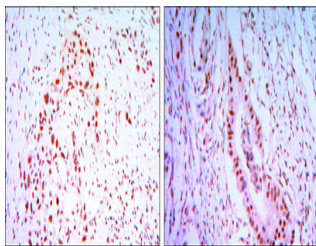
Product Type	Primary antibodies
Short Description	Mouse monoclonal antibody anti-Cell Division Cycle Protein 27 Homolog is suitable for use in Western Blot, Immunohistochemistry, Immunofluorescence and ELISA research applications.
Applications	WB, IHC-P, IF-P, ELISA
Host/Source	Mouse
Reactivity	Human

PRODUCT PROPERTIES

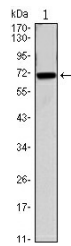
Clonality	Monoclonal
Clone ID	5C12
Concentration	
Conjugation	Unconjugated
Purification	The antibody was isolated from ascitic fluid by immunoaffinity chromatography using antigens coupled to agarose beads.
Dilution Range	WB 1:500-1:2000 IHC 1:200-1:1000 ELISA 1:10000
Formulation	Ascitic fluid, 0.03% Sodium Azide, 0.5% BSA, 50% Glycerol.
Isotype	IgG1
Storage Instruction	Store at -20°C for up to 1 year from the date of receipt, and avoid repeat freeze-thaw cycles.

TARGET INFORMATION

Gene ID	996
Gene Symbol	CDC27
Uniprot ID	CDC27_HUMAN
Immunogen	Purified recombinant fragment of human CDC27 expressed in E.coli.
Immunogen Region	
Specificity	CDC27 monoclonal antibody (Cell Division Cycle Protein 27 Homolog) binds to endogenous Cell Division Cycle Protein 27 Homolog.
Immunogen Sequence	



Immunohistochemistry analysis of paraffin-embedded lung cancer tissues (left) and colon cancer tissues (right) with DAB staining using CDC27 monoclonal antibody.



Western blot analysis using CDC27 monoclonal antibody against CDC27-hlgGfC transfected HEK293 cell.