

Anti-CDC25C antibody [1F12] (STJ97944)

STJ97944

GENERAL INFORMATION

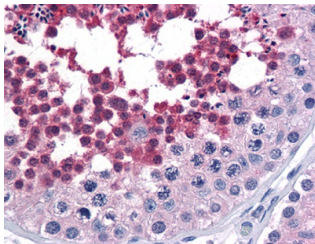
Product Type	Primary antibodies
Short Description	Mouse monoclonal antibody anti-M-Phase Inducer Phosphatase 3 is suitable for use in Western Blot, Immunohistochemistry, Immunofluorescence and ELISA research applications.
Applications	WB, IHC-P, IF-P, ELISA
Host/Source	Mouse
Reactivity	Human

PRODUCT PROPERTIES

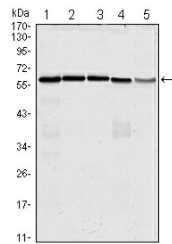
Clonality	Monoclonal
Clone ID	1F12
Concentration	
Conjugation	Unconjugated
Purification	The antibody was isolated from ascitic fluid by immunoaffinity chromatography using antigens coupled to agarose beads.
Dilution Range	WB 1:500-1:2000 IHC 1:200-1:1000 ELISA 1:10000
Formulation	Ascitic fluid, 0.03% Sodium Azide, 0.5% BSA, 50% Glycerol.
Isotype	IgG1
Storage Instruction	Store at -20°C for up to 1 year from the date of receipt, and avoid repeat freeze-thaw cycles.

TARGET INFORMATION

Gene ID	995
Gene Symbol	CDC25C
Uniprot ID	MPIP3_HUMAN
Immunogen	Purified recombinant fragment of human CDC25C expressed in E.coli.
Immunogen Region	
Specificity	CDC25C monoclonal antibody (M-Phase Inducer Phosphatase 3) binds to endogenous M-Phase Inducer Phosphatase 3.
Immunogen Sequence	



Immunohistochemistry analysis of paraffin-embedded human Testis tissues with AEC staining using CDC25C monoclonal antibody.



Western blot analysis using CDC25C monoclonal antibody against HeLa (1), K562 (2), PC-3 (3), HEK293 (4) and Raw264.7 (5) cell lysate.