

Anti-CD69 antibody [8B6] (STJ97933)

STJ97933

GENERAL INFORMATION

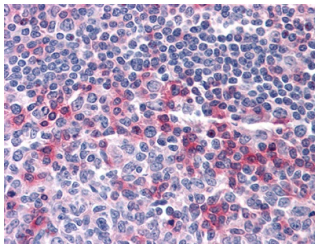
Product Type	Primary antibodies
Short Description	Mouse monoclonal antibody anti-Early Activation antigen Cd69 is suitable for use in Western Blot, Immunohistochemistry, Immunofluorescence, Flow Cytometry and ELISA research applications.
Applications	WB, IHC-P, IF-P, FC, ELISA
Host/Source	Mouse
Reactivity	Human

PRODUCT PROPERTIES

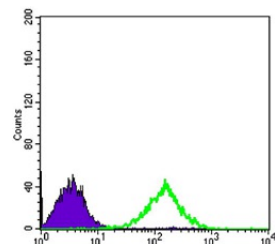
Clonality	Monoclonal
Clone ID	8B6
Concentration	
Conjugation	Unconjugated
Purification	The antibody was isolated from ascitic fluid by immunoaffinity chromatography using antigens coupled to agarose beads.
Dilution Range	WB 1:500-1:2000 IHC 1:200-1:1000 FC 1:200-1:400 ELISA 1:10000
Formulation	Ascitic fluid, 0.03% Sodium Azide, 0.5% BSA, 50% Glycerol.
Isotype	IgG1
Storage Instruction	Store at -20°C for up to 1 year from the date of receipt, and avoid repeat freeze-thaw cycles.

TARGET INFORMATION

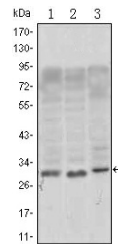
Gene ID	969
Gene Symbol	CD69
Uniprot ID	CD69_HUMAN
Immunogen	Purified recombinant fragment of human CD69 expressed in E.coli.
Immunogen Region	
Specificity	CD69 monoclonal antibody (Early Activation Antigen Cd69) binds to endogenous Early Activation Antigen Cd69.
Immunogen Sequence	



Immunohistochemistry analysis of paraffin-embedded human Tonsil tissues with AEC staining using CD69 monoclonal antibody.



Flow cytometric analysis of Jurkat cells using CD69 monoclonal antibody (green) and negative control (purple).



Western blot analysis using CD69 monoclonal antibody against Jurkat (1), L1210 (2) and TPH-1 (3) cell lysate.

This product is suitable for in-vitro studies under the RESEARCH USE ONLY [RUO] licence. This product must not be used as for diagnostic or other medical purposes.
St John's Laboratory Ltd, Knowledge Dock Business Centre, University Way, London, E16 2RD | Tel: 0208 223 3081