

Anti-CEACAM5 antibody [3G12] (STJ97931)

STJ97931

GENERAL INFORMATION

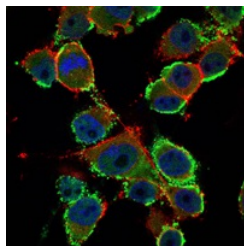
Product Type	Primary antibodies
Short Description	Mouse monoclonal antibody anti-Carcinoembryonic antigen-Related Cell Adhesion Molecule 5 is suitable for use in Western Blot, Immunofluorescence, Immunocytochemistry and ELISA research applications.
Applications	WB, IF, ICC, ELISA
Host/Source	Mouse
Reactivity	Human

PRODUCT PROPERTIES

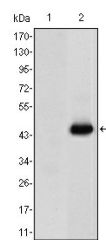
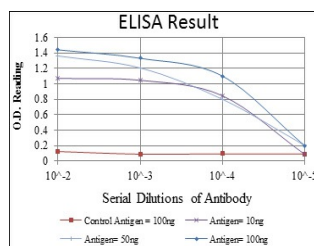
Clonality	Monoclonal
Clone ID	3G12
Concentration	
Conjugation	Unconjugated
Purification	The antibody was isolated from ascitic fluid by immunoaffinity chromatography using antigens coupled to agarose beads.
Dilution	WB 1:500-1:2000
Range	IF 1:200-1:1000 ELISA 1:10000
Formulation	Ascitic fluid, 0.03% Sodium Azide, 0.5% BSA, 50% Glycerol.
Isotype	IgG1
Storage	Store at -20°C for up to 1 year from the date of receipt, and avoid repeat freeze-thaw cycles.
Instruction	

TARGET INFORMATION

Gene ID	1048
Gene Symbol	CEACAM5
Uniprot ID	CEAM5_HUMAN
Immunogen	Purified recombinant fragment of human CD66e expressed in E.coli.
Immunogen Region	
Specificity	CEACAM5 monoclonal antibody (Carcinoembryonic Antigen-Related Cell Adhesion Molecule 5) binds to endogenous Carcinoembryonic Antigen-Related Cell Adhesion Molecule 5.
Immunogen Sequence	



Immunofluorescence analysis of PANC-1 cells using CD66e monoclonal antibody (green). Blue: DRAQ5 fluorescent DNA dye. Red: Actin filaments have been labeled with Alexa Fluor-555 phalloidin.



Western blot analysis using CD66e monoclonal antibody against HEK293 (1) and CEA-hlgGfC transfected HEK293 (2) cell lysate.

This product is suitable for in-vitro studies under the RESEARCH USE ONLY [RUO] licence. This product must not be used as for diagnostic or other medical purposes.
St John's Laboratory Ltd, Knowledge Dock Business Centre, University Way, London, E16 2RD | Tel: 0208 223 3081