

Anti-CD3E antibody [4E2] (STJ97925)

STJ97925

GENERAL INFORMATION

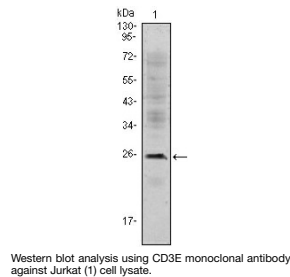
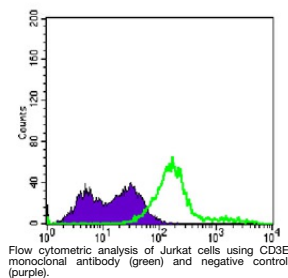
Product Type	Primary antibodies
Short Description	Mouse monoclonal antibody anti-T-Cell Surface Glycoprotein Cd3 Epsilon Chain is suitable for use in Western Blot, Flow Cytometry and ELISA research applications.
Applications	WB, FC, ELISA
Host/Source	Mouse
Reactivity	Human

PRODUCT PROPERTIES

Clonality	Monoclonal
Clone ID	4E2
Concentration	Unconjugated
Purification	The antibody was isolated from ascitic fluid by immunoaffinity chromatography using antigens coupled to agarose beads.
Dilution Range	WB 1:500-1:2000 FC 1:200-1:400 ELISA 1:10000
Formulation	Ascitic fluid, 0.03% Sodium Azide, 0.5% BSA, 50% Glycerol.
Isotype	IgG1
Storage Instruction	Store at -20°C for up to 1 year from the date of receipt, and avoid repeat freeze-thaw cycles.

TARGET INFORMATION

Gene ID	916
Gene Symbol	CD3E
Uniprot ID	CD3E_HUMAN
Immunogen	Purified recombinant fragment of CD3E expressed in E.coli.
Immunogen Region	
Specificity	CD3E monoclonal antibody (T-Cell Surface Glycoprotein Cd3 Epsilon Chain) binds to endogenous T-Cell Surface Glycoprotein Cd3 Epsilon Chain.
Immunogen Sequence	



This product is suitable for in-vitro studies under the RESEARCH USE ONLY [RUO] licence. This product must not be used as for diagnostic or other medical purposes.
St John's Laboratory Ltd, Knowledge Dock Business Centre, University Way, London, E16 2RD | Tel: 0208 223 3081