

Anti-CD38 antibody [6E12D] (STJ97924)

STJ97924

GENERAL INFORMATION

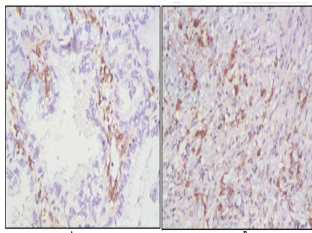
Product Type	Primary antibodies
Short Description	Mouse monoclonal antibody anti-Adp-Ribosyl Cyclase/Cyclic Adp-Ribose Hydrolase 1 is suitable for use in Western Blot, Immunohistochemistry, Immunofluorescence and ELISA research applications.
Applications	WB, IHC-P, IF-P, ELISA
Host/Source	Mouse
Reactivity	Human

PRODUCT PROPERTIES

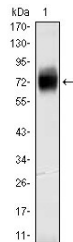
Clonality	Monoclonal
Clone ID	6E12D
Concentration	
Conjugation	Unconjugated
Purification	The antibody was isolated from ascitic fluid by immunoaffinity chromatography using antigens coupled to agarose beads.
Dilution Range	WB 1:500-1:2000 IHC 1:200-1:1000 ELISA 1:10000
Formulation	Ascitic fluid, 0.03% Sodium Azide, 0.5% BSA, 50% Glycerol.
Isotype	IgG1
Storage Instruction	Store at -20°C for up to 1 year from the date of receipt, and avoid repeat freeze-thaw cycles.

TARGET INFORMATION

Gene ID	952
Gene Symbol	CD38
Uniprot ID	CD38_HUMAN
Immunogen	Purified recombinant fragment of human CD38 expressed in E.coli.
Region	
Specificity	CD38 monoclonal antibody (Adp-Ribosyl Cyclase/Cyclic Adp-Ribose Hydrolase 1) binds to endogenous Adp-Ribosyl Cyclase/Cyclic Adp-Ribose Hydrolase 1.
Immunogen Sequence	



Immunohistochemistry analysis of paraffin-embedded human lung cancer (A), lymphonodus tissue (B), showing cytomembrane localization with DAB staining using CD38 monoclonal antibody.



Western blot analysis using CD38 monoclonal antibody against CD38-FlagGFP transfected HEK293 cell lysate.

This product is suitable for in-vitro studies under the RESEARCH USE ONLY [RUO] licence. This product must not be used as for diagnostic or other medical purposes.
St John's Laboratory Ltd, Knowledge Dock Business Centre, University Way, London, E16 2RD | Tel: 0208 223 3081