

## Anti-CD34 antibody [4H5E7/9B10D4] (STJ97922)

STJ97922

### GENERAL INFORMATION

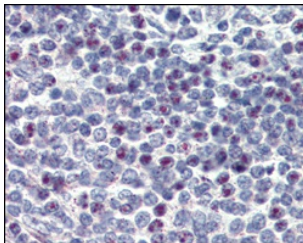
<b>Product Type</b>	Primary antibodies
<b>Short Description</b>	Mouse monoclonal antibody anti-Hematopoietic Progenitor Cell antigen Cd34 is suitable for use in Western Blot, Immunohistochemistry, Immunofluorescence, Immunocytochemistry and ELISA research applications.
<b>Applications</b>	WB, IHC-P, IF, ICC, ELISA
<b>Host/Source</b>	Mouse
<b>Reactivity</b>	Human

### PRODUCT PROPERTIES

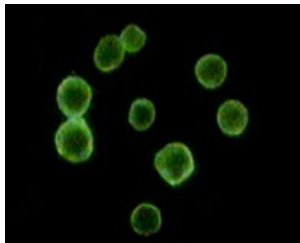
<b>Clonality</b>	Monoclonal
<b>Clone ID</b>	4H5E7/9B10D4
<b>Concentration</b>	
<b>Conjugation</b>	Unconjugated
<b>Purification</b>	The antibody was isolated from ascitic fluid by immunoaffinity chromatography using antigens coupled to agarose beads.
<b>Dilution Range</b>	WB 1:500-1:2000 IHC 1:200-1:1000 IF 1:200-1:1000 ELISA 1:10000
<b>Formulation</b>	Ascitic fluid, 0.03% Sodium Azide, 0.5% BSA, 50% Glycerol.
<b>Isotype</b>	
<b>Storage Instruction</b>	Store at -20°C for up to 1 year from the date of receipt, and avoid repeat freeze-thaw cycles.

### TARGET INFORMATION

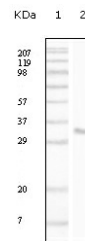
<b>Gene ID</b>	947
<b>Gene Symbol</b>	CD34
<b>Uniprot ID</b>	CD34_HUMAN
<b>Immunogen</b>	Purified recombinant fragment of CD34 expressed in E.coli.
<b>Immunogen Region</b>	
<b>Specificity</b>	CD34 monoclonal antibody (Hematopoietic Progenitor Cell Antigen Cd34) binds to endogenous Hematopoietic Progenitor Cell Antigen Cd34.
<b>Immunogen Sequence</b>	



Immunohistochemistry analysis of paraffin-embedded human spleen tissues with DAB staining using CD34 monoclonal antibody.



Immunofluorescence analysis of peripheral blood cells using CD34 monoclonal antibody.



Western blot analysis using CD34 monoclonal antibody against truncated CD34 recombinant protein.

This product is suitable for in-vitro studies under the RESEARCH USE ONLY [RUO] licence. This product must not be used as for diagnostic or other medical purposes.  
St John's Laboratory Ltd, Knowledge Dock Business Centre, University Way, London, E16 2RD | Tel: 0208 223 3081