

## Anti-CD276 antibody [6A1] (STJ97917)

STJ97917

### GENERAL INFORMATION

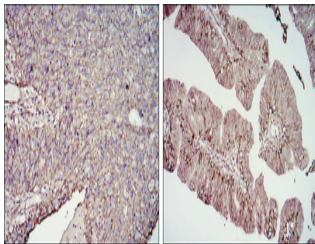
<b>Product Type</b>	Primary antibodies
<b>Short Description</b>	Mouse monoclonal antibody anti-Cd276 antigen is suitable for use in Western Blot, Immunohistochemistry, Immunofluorescence, Flow Cytometry and ELISA research applications.
<b>Applications</b>	WB, IHC-P, IF-P, FC, ELISA
<b>Host/Source</b>	Mouse
<b>Reactivity</b>	Human

### PRODUCT PROPERTIES

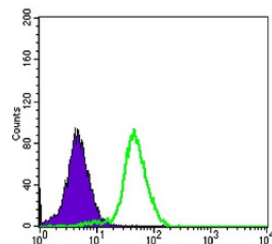
<b>Clonality</b>	Monoclonal
<b>Clone ID</b>	6A1
<b>Concentration</b>	
<b>Conjugation</b>	Unconjugated
<b>Purification</b>	The antibody was isolated from ascitic fluid by immunoaffinity chromatography using antigens coupled to agarose beads.
<b>Dilution Range</b>	WB 1:500-1:2000 IHC 1:200-1:1000 FC 1:200-1:400 ELISA 1:10000
<b>Formulation</b>	Ascitic fluid, 0.03% Sodium Azide, 0.5% BSA, 50% Glycerol.
<b>Isotype</b>	IgG1
<b>Storage Instruction</b>	Store at -20°C for up to 1 year from the date of receipt, and avoid repeat freeze-thaw cycles.

### TARGET INFORMATION

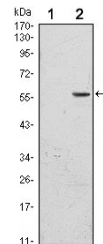
<b>Gene ID</b>	80381
<b>Gene Symbol</b>	CD276
<b>Uniprot ID</b>	CD276_HUMAN
<b>Immunogen</b>	Purified recombinant fragment of human CD276 expressed in E.coli.
<b>Immunogen Region</b>	
<b>Specificity</b>	CD276 monoclonal antibody (Cd276 Antigen) binds to endogenous Cd276 Antigen.
<b>Immunogen Sequence</b>	



Immunohistochemistry analysis of paraffin-embedded cervical cancer tissues (left) and ovarian cancer tissues (right) with DAB staining using CD276 monoclonal antibody.



Flow cytometric analysis of PC-3 cells using CD276 monoclonal antibody (green) and negative control (purple).



Western blot analysis using CD276 monoclonal antibody against HEK293 (1) and CD276-hlgGfc transfected HEK293 (2) cell lysate.