

Anti-MS4A1 antibody [3E9D3C1G3] (STJ97914)

STJ97914

GENERAL INFORMATION

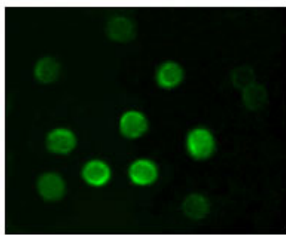
Product Type	Primary antibodies
Short Description	Mouse monoclonal antibody anti-B-Lymphocyte antigen Cd20 is suitable for use in Immunohistochemistry, Immunofluorescence, Immunocytochemistry and ELISA research applications.
Applications	IHC-P, IF, ICC, ELISA
Host/Source	Mouse
Reactivity	Human

PRODUCT PROPERTIES

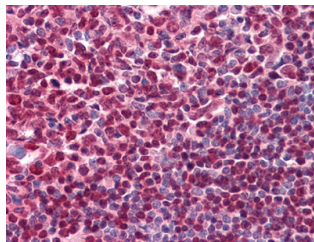
Clonality	Monoclonal
Clone ID	3E9D3C1G3
Concentration	
Conjugation	Unconjugated
Purification	The antibody was isolated from ascitic fluid by immunoaffinity chromatography using antigens coupled to agarose beads.
Dilution Range	IHC 1:200-1:1000 IF 1:200-1:1000 ELISA 1:10000
Formulation	Ascitic fluid, 0.03% Sodium Azide, 0.5% BSA, 50% Glycerol.
Isotype	
Storage Instruction	Store at -20°C for up to 1 year from the date of receipt, and avoid repeat freeze-thaw cycles.

TARGET INFORMATION

Gene ID	931
Gene Symbol	MS4A1
Uniprot ID	CD20_HUMAN
Immunogen	Synthetic peptide corresponding to aa (EPANPSEKNPSTQY) of human CD20, conjugated to KLH.
Immunogen Region	
Specificity	MS4A1 monoclonal antibody (B-Lymphocyte Antigen Cd20) binds to endogenous B-Lymphocyte Antigen Cd20.
Immunogen Sequence	



Immunofluorescence analysis of B lymphocytes using CD20 monoclonal antibody.



Immunohistochemistry analysis of paraffin-embedded human tonsil tissues with AEC staining using CD20 monoclonal antibody.

This product is suitable for in-vitro studies under the RESEARCH USE ONLY [RUO] licence. This product must not be used as for diagnostic or other medical purposes.
St John's Laboratory Ltd, Knowledge Dock Business Centre, University Way, London, E16 2RD | Tel: 0208 223 3081