

Anti-CD1A antibody [6H3] (STJ97912)

STJ97912

GENERAL INFORMATION

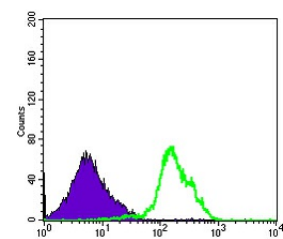
Product Type	Primary antibodies
Short Description	Mouse monoclonal antibody anti-T-Cell Surface Glycoprotein Cd1a is suitable for use in Western Blot, Flow Cytometry and ELISA research applications.
Applications	WB, FC, ELISA
Host/Source	Mouse
Reactivity	Human

PRODUCT PROPERTIES

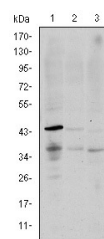
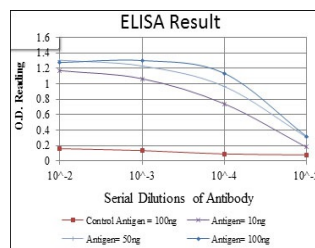
Clonality	Monoclonal
Clone ID	6H3
Concentration	
Conjugation	Unconjugated
Purification	The antibody was isolated from ascitic fluid by immunoaffinity chromatography using antigens coupled to agarose beads.
Dilution Range	WB 1:500-1:2000 FC 1:200-1:400 ELISA 1:10000
Formulation	Ascitic fluid, 0.03% Sodium Azide, 0.5% BSA, 50% Glycerol.
Isotype	IgG1
Storage Instruction	Store at -20°C for up to 1 year from the date of receipt, and avoid repeat freeze-thaw cycles.

TARGET INFORMATION

Gene ID	909
Gene Symbol	CD1A
Uniprot ID	CD1A_HUMAN
Immunogen	Purified recombinant fragment of human CD1A expressed in E.coli.
Immunogen Region	
Specificity	CD1A monoclonal antibody (T-Cell Surface Glycoprotein Cd1a) binds to endogenous T-Cell Surface Glycoprotein Cd1a.
Immunogen Sequence	



Flow cytometric analysis of RAJI cells using CD1A monoclonal antibody (green) and negative control (purple).



Western blot analysis using CD1A monoclonal antibody against K562 (1), RAJI (2), and MOLT4 (3) cell lysate.