

## Anti-ALCAM antibody (405-524) [10F1G12] (STJ97908)

STJ97908

### GENERAL INFORMATION

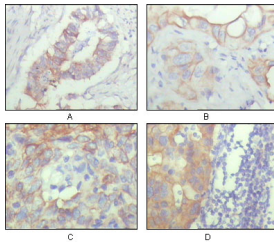
<b>Product Type</b>	Primary antibodies
<b>Short Description</b>	Mouse monoclonal antibody anti-Cd166 antigen (405-524) is suitable for use in Immunohistochemistry, Immunofluorescence and ELISA research applications.
<b>Applications</b>	IHC-P, IF-P, ELISA
<b>Host/Source</b>	Mouse
<b>Reactivity</b>	Human

### PRODUCT PROPERTIES

<b>Clonality</b>	Monoclonal
<b>Clone ID</b>	10F1G12
<b>Concentration</b>	
<b>Conjugation</b>	Unconjugated
<b>Purification</b>	The antibody was isolated from ascitic fluid by immunoaffinity chromatography using antigens coupled to agarose beads.
<b>Dilution Range</b>	IHC 1:200-1:1000 ELISA 1:10000
<b>Formulation</b>	Ascitic fluid, 0.03% Sodium Azide, 0.5% BSA, 50% Glycerol.
<b>Isotype</b>	IgG1
<b>Storage</b>	Store at -20°C for up to 1 year from the date of receipt, and avoid repeat freeze-thaw cycles.
<b>Instruction</b>	

### TARGET INFORMATION

<b>Gene ID</b>	214
<b>Gene Symbol</b>	ALCAM
<b>Uniprot ID</b>	CD166_HUMAN
<b>Immunogen</b>	Purified recombinant fragment of CD166 (aa405-524) expressed in E.coli.
<b>Immunogen Region</b>	405-524
<b>Specificity</b>	ALCAM monoclonal antibody (Cd166 Antigen) binds to endogenous Cd166 Antigen at the amino acid region 405-524.
<b>Immunogen Sequence</b>	



Immunohistochemistry analysis of paraffin-embedded human ovary carcinoma (A), kidney carcinoma (B), lung carcinoma (C) and breast carcinoma (D), showing cytoplasmic and membrane localization with DAB staining using CD166 monoclonal antibody.