

Anti-PROM1 antibody [3F10] (STJ97904)

STJ97904

GENERAL INFORMATION

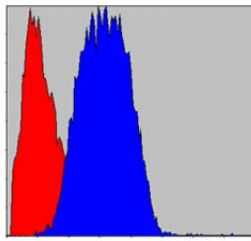
Product Type	Primary antibodies
Short Description	Mouse monoclonal antibody anti-Prominin-1 is suitable for use in Immunohistochemistry, Immunofluorescence, Flow Cytometry and ELISA research applications.
Applications	IHC-P, IF-P, FC, ELISA
Host/Source	Mouse
Reactivity	Human

PRODUCT PROPERTIES

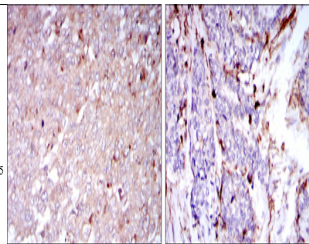
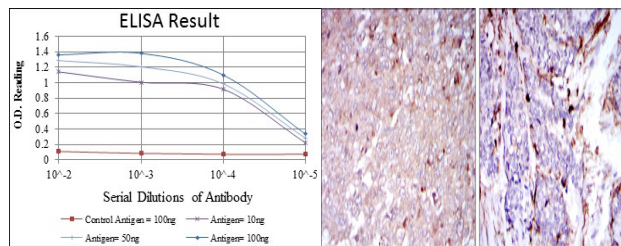
Clonality	Monoclonal
Clone ID	3F10
Concentration	
Conjugation	Unconjugated
Purification	The antibody was isolated from ascitic fluid by immunoaffinity chromatography using antigens coupled to agarose beads.
Dilution Range	IHC 1:200-1:1000 FC 1:200-1:400 ELISA 1:10000
Formulation	Ascitic fluid, 0.03% Sodium Azide, 0.5% BSA, 50% Glycerol.
Isotype	IgG1
Storage Instruction	Store at -20°C for up to 1 year from the date of receipt, and avoid repeat freeze-thaw cycles.

TARGET INFORMATION

Gene ID	8842
Gene Symbol	PROM1
Uniprot ID	PROM1_HUMAN
Immunogen	Synthesized peptide of human CD133.
Immunogen Region	
Specificity	PROM1 monoclonal antibody (Prominin-1) binds to endogenous Prominin-1.
Immunogen Sequence	



Flow cytometric analysis of HeLa cells using CD133 monoclonal antibody (blue) and negative control (red).



Immunohistochemistry analysis of paraffin-embedded human breast cancer tissues (left) and human esophageal cancer tissues (right) with DAB staining using CD133 monoclonal antibody.

This product is suitable for in-vitro studies under the RESEARCH USE ONLY [RUO] licence. This product must not be used as for diagnostic or other medical purposes.
St John's Laboratory Ltd, Knowledge Dock Business Centre, University Way, London, E16 2RD | Tel: 0208 223 3081