

Anti-CALR antibody [1G6A7] (STJ97892)

STJ97892

GENERAL INFORMATION

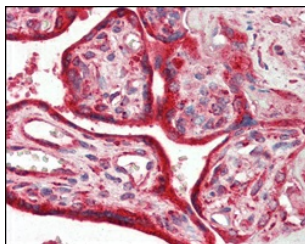
Product Type	Primary antibodies
Short Description	Mouse monoclonal antibody anti-Calreticulin is suitable for use in Western Blot, Immunohistochemistry, Immunofluorescence, Immunocytochemistry and ELISA research applications.
Applications	WB, IHC-P, IF, ICC, ELISA
Host/Source	Mouse
Reactivity	Human, Mouse

PRODUCT PROPERTIES

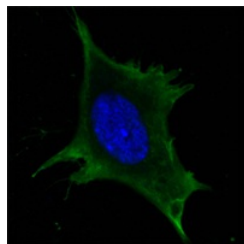
Clonality	Monoclonal
Clone ID	1G6A7
Concentration	
Conjugation	Unconjugated
Purification	The antibody was isolated from ascitic fluid by immunoaffinity chromatography using antigens coupled to agarose beads.
Dilution Range	WB 1:500-1:2000 IHC 1:200-1:1000 IF 1:200-1:1000 ELISA 1:10000
Formulation	Ascitic fluid, 0.03% Sodium Azide, 0.5% BSA, 50% Glycerol.
Isotype	IgG2a
Storage Instruction	Store at -20°C for up to 1 year from the date of receipt, and avoid repeat freeze-thaw cycles.

TARGET INFORMATION

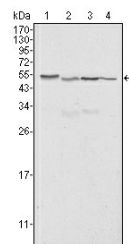
Gene ID	811
Gene Symbol	CALR
Uniprot ID	CALR_HUMAN
Immunogen	Synthetic peptide corresponding to aa (EEEDVPGQAKDELQ) of human Calreticulin, conjugated to KLH.
Immunogen Region	
Specificity	CALR monoclonal antibody (Calreticulin) binds to endogenous Calreticulin.
Immunogen Sequence	



Immunohistochemistry analysis of paraffin-embedded human placenta tissues with AEC staining using Calregulin monoclonal antibody.



Confocal immunofluorescence analysis of 3T3-L1 cells using Calregulin monoclonal antibody (green). Blue: DRAQ5 fluorescent DNA dye.



Western blot analysis using Calregulin monoclonal antibody against HeLa (1), A549 (2), NTERA2 (3) and MCF-7 (4) cell lysate.

This product is suitable for in-vitro studies under the RESEARCH USE ONLY [RUO] licence. This product must not be used as for diagnostic or other medical purposes.
St John's Laboratory Ltd, Knowledge Dock Business Centre, University Way, London, E16 2RD | Tel: 0208 223 3081