

Anti-BMX antibody [1C6] (STJ97878)

STJ97878

GENERAL INFORMATION

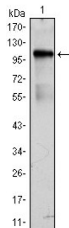
Product Type	Primary antibodies
Short Description	Mouse monoclonal antibody anti-Cytoplasmic Tyrosine-Protein Kinase Bmx is suitable for use in Western Blot and ELISA research applications.
Applications	WB, ELISA
Host/Source	Mouse
Reactivity	Human

PRODUCT PROPERTIES

Clonality	Monoclonal
Clone ID	1C6
Concentration	
Conjugation	Unconjugated
Purification	The antibody was isolated from ascitic fluid by immunoaffinity chromatography using antigens coupled to agarose beads.
Dilution Range	WB 1:500-1:2000 ELISA 1:10000
Formulation	Ascitic fluid, 0.03% Sodium Azide, 0.5% BSA, 50% Glycerol.
Isotype	IgG1
Storage Instruction	Store at -20°C for up to 1 year from the date of receipt, and avoid repeat freeze-thaw cycles.

TARGET INFORMATION

Gene ID	660
Gene Symbol	BMX
Uniprot ID	BMX_HUMAN
Immunogen	Purified recombinant fragment of human Bmx expressed in E.coli.
Immunogen Region	
Specificity	BMX monoclonal antibody (Cytoplasmic Tyrosine-Protein Kinase Bmx) binds to endogenous Cytoplasmic Tyrosine-Protein Kinase Bmx.
Immunogen Sequence	



Western blot analysis using Bmx monoclonal antibody against BMX-hlgGfC transfected HEK293 cell lysate.