

Anti-BDH1 antibody [1A5] (STJ97861)

STJ97861

GENERAL INFORMATION

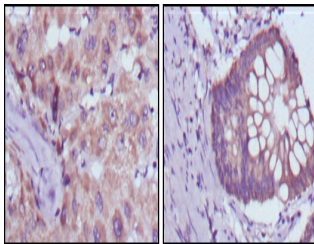
Product Type	Primary antibodies
Short Description	Mouse monoclonal antibody anti-D-Beta-Hydroxybutyrate Dehydrogenase-Mitochondrial is suitable for use in Western Blot, Immunohistochemistry, Immunofluorescence and ELISA research applications.
Applications	WB, IHC-P, IF-P, ELISA
Host/Source	Mouse
Reactivity	Human, Mouse

PRODUCT PROPERTIES

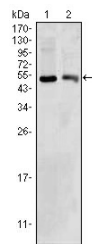
Clonality	Monoclonal
Clone ID	1A5
Concentration	
Conjugation	Unconjugated
Purification	The antibody was isolated from ascitic fluid by immunoaffinity chromatography using antigens coupled to agarose beads.
Dilution Range	WB 1:500-1:2000 IHC 1:200-1:1000 ELISA 1:10000
Formulation	Ascitic fluid, 0.03% Sodium Azide, 0.5% BSA, 50% Glycerol.
Isotype	IgG1
Storage Instruction	Store at -20°C for up to 1 year from the date of receipt, and avoid repeat freeze-thaw cycles.

TARGET INFORMATION

Gene ID	622
Gene Symbol	BDH1
Uniprot ID	BDH_HUMAN
Immunogen	Purified recombinant fragment of human BDH1 expressed in E.coli.
Immunogen Region	
Specificity	BDH1 monoclonal antibody (D-Beta-Hydroxybutyrate Dehydrogenase-Mitochondrial) binds to endogenous D-Beta-Hydroxybutyrate Dehydrogenase-Mitochondrial.
Immunogen Sequence	



Immunohistochemistry analysis of paraffin-embedded human liver cancer (left) and colorectal cancer tissues (right) with DAB staining using BDH1 monoclonal antibody.



Western blot analysis using BDH1 monoclonal antibody against HepG2 (1) and NIH/3T3 (2) cell lysate.