

## Anti-BCL2 antibody [8E12] (STJ97860)

STJ97860

### GENERAL INFORMATION

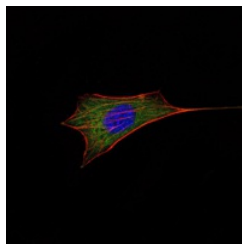
<b>Product Type</b>	Primary antibodies
<b>Short Description</b>	Mouse monoclonal antibody anti-Apoptosis Regulator Bcl-2 is suitable for use in Immunohistochemistry, Immunofluorescence, Immunocytochemistry, Flow Cytometry and ELISA research applications.
<b>Applications</b>	IHC-P, IF, ICC, FC, ELISA
<b>Host/Source</b>	Mouse
<b>Reactivity</b>	Human, Mouse

### PRODUCT PROPERTIES

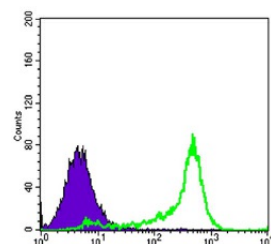
<b>Clonality</b>	Monoclonal
<b>Clone ID</b>	8E12
<b>Concentration</b>	
<b>Conjugation</b>	Unconjugated
<b>Purification</b>	The antibody was isolated from ascitic fluid by immunoaffinity chromatography using antigens coupled to agarose beads.
<b>Dilution</b>	IHC 1:200-1:1000
<b>Range</b>	IF 1:200-1:1000 FC 1:200-1:400 ELISA 1:10000
<b>Formulation</b>	Ascitic fluid, 0.03% Sodium Azide, 0.5% BSA, 50% Glycerol.
<b>Isotype</b>	IgG1
<b>Storage</b>	Store at -20°C for up to 1 year from the date of receipt, and avoid repeat freeze-thaw cycles.
<b>Instruction</b>	

### TARGET INFORMATION

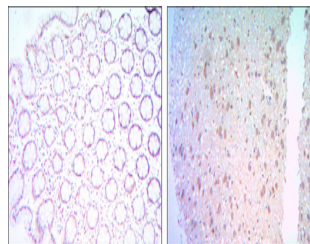
<b>Gene ID</b>	596
<b>Gene Symbol</b>	BCL2
<b>Uniprot ID</b>	BCL2_HUMAN
<b>Immunogen</b>	Synthetic peptide corresponding to residues surrounding Bcl-2, conjugated to KLH.
<b>Immunogen Region</b>	
<b>Specificity</b>	BCL2 monoclonal antibody (Apoptosis Regulator Bcl-2) binds to endogenous Apoptosis Regulator Bcl-2.
<b>Immunogen Sequence</b>	



Immunofluorescence analysis of NIH/3T3 cells using Bcl-2 monoclonal antibody (green). Blue: DRAQ5 fluorescent DNA dye. Red: Actin filaments have been labeled with Alexa Fluor-555 phalloidin.



Flow cytometric analysis of 3T3L1 cells using Bcl-2 monoclonal antibody (green) and negative control (purple).



Immunohistochemistry analysis of paraffin-embedded colon cancer tissues (left) and human brain tissues (right) with DAB staining using Bcl-2 monoclonal antibody.

This product is suitable for in-vitro studies under the RESEARCH USE ONLY [RUO] licence. This product must not be used as for diagnostic or other medical purposes.  
St John's Laboratory Ltd, Knowledge Dock Business Centre, University Way, London, E16 2RD | Tel: 0208 223 3081