

Anti-ATM antibody [5C5] (STJ97855)

STJ97855

GENERAL INFORMATION

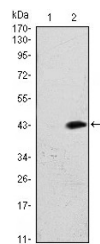
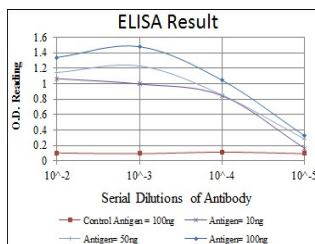
Product Type	Primary antibodies
Short Description	Mouse monoclonal antibody anti-Serine-Protein Kinase Atm is suitable for use in Western Blot and ELISA research applications.
Applications	WB, ELISA
Host/Source	Mouse
Reactivity	Human

PRODUCT PROPERTIES

Clonality	Monoclonal
Clone ID	5C5
Concentration	
Conjugation	Unconjugated
Purification	The antibody was isolated from ascitic fluid by immunoaffinity chromatography using antigens coupled to agarose beads.
Dilution Range	WB 1:500-1:2000 ELISA 1:10000
Formulation	Ascitic fluid, 0.03% Sodium Azide, 0.5% BSA, 50% Glycerol.
Isotype	IgG1
Storage Instruction	Store at -20°C for up to 1 year from the date of receipt, and avoid repeat freeze-thaw cycles.

TARGET INFORMATION

Gene ID	472
Gene Symbol	ATM
Uniprot ID	ATM_HUMAN
Immunogen	Purified recombinant fragment of human Atm expressed in E.coli.
Immunogen Region	
Specificity	ATM monoclonal antibody (Serine-Protein Kinase Atm) binds to endogenous Serine-Protein Kinase Atm.
Immunogen Sequence	



Western blot analysis using Atm monoclonal antibody against HEK293 (1) and ATM-hlgGfC transfected HEK293 (2) cell lysate.

This product is suitable for in-vitro studies under the RESEARCH USE ONLY [RUO] licence. This product must not be used as for diagnostic or other medical purposes.
 St John's Laboratory Ltd, Knowledge Dock Business Centre, University Way, London, E16 2RD | Tel: 0208 223 3081