

Anti-LPA antibody (4330-4521) [8F6A9/8H5C5] (STJ97831)

STJ97831

GENERAL INFORMATION

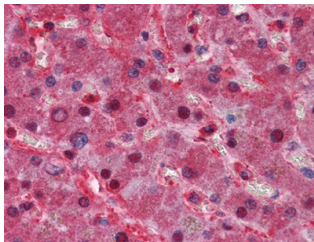
Product Type	Primary antibodies
Short Description	Mouse monoclonal antibody anti-Apolipoprotein (A) (4330-4521) is suitable for use in Western Blot, Immunohistochemistry, Immunofluorescence and ELISA research applications.
Applications	WB, IHC-P, IF-P, ELISA
Host/Source	Mouse
Reactivity	Human

PRODUCT PROPERTIES

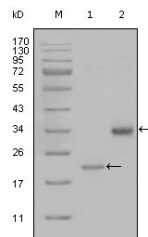
Clonality	Monoclonal
Clone ID	8F6A9/8H5C5
Concentration	
Conjugation	Unconjugated
Purification	The antibody was isolated from ascitic fluid by immunoaffinity chromatography using antigens coupled to agarose beads.
Dilution Range	WB 1:500-1:2000 IHC 1:200-1:1000 ELISA 1:10000
Formulation	Ascitic fluid, 0.03% Sodium Azide, 0.5% BSA, 50% Glycerol.
Isotype	IgG1
Storage Instruction	Store at -20°C for up to 1 year from the date of receipt, and avoid repeat freeze-thaw cycles.

TARGET INFORMATION

Gene ID	NA
Gene Symbol	LPA
Uniprot ID	APOA_HUMAN
Immunogen	Purified recombinant fragment of ApoA (4330-4521) expressed in E.coli.
Immunogen Region	4330-4521
Specificity	LPA monoclonal antibody (Apolipoprotein (A) binds to endogenous Apolipoprotein (A) at the amino acid region 4330-4521.
Immunogen Sequence	



Immunohistochemistry analysis of paraffin-embedded human Liver tissues with AEC staining using ApoA monoclonal antibody.



Western blot analysis using ApoA monoclonal antibody against truncated LPA-His recombinant protein (1) and truncated Trx-LPA (aa4330-4521) recombinant protein (2).

This product is suitable for in-vitro studies under the RESEARCH USE ONLY [RUO] licence. This product must not be used as for diagnostic or other medical purposes.
St John's Laboratory Ltd, Knowledge Dock Business Centre, University Way, London, E16 2RD | Tel: 0208 223 3081