

## Anti-AMACR antibody [2A10F3] (STJ97825)

STJ97825

### GENERAL INFORMATION

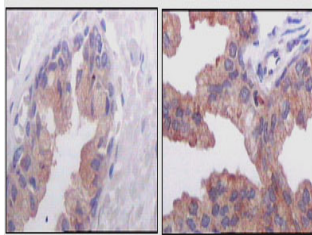
<b>Product Type</b>	Primary antibodies
<b>Short Description</b>	Mouse monoclonal antibody anti-Alpha-Methylacyl-Coa Racemase is suitable for use in Western Blot, Immunohistochemistry, Immunofluorescence, Immunocytochemistry and ELISA research applications.
<b>Applications</b>	WB, IHC-P, IF, ICC, ELISA
<b>Host/Source</b>	Mouse
<b>Reactivity</b>	Human, Mouse

### PRODUCT PROPERTIES

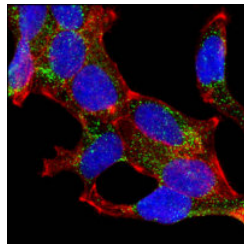
<b>Clonality</b>	Monoclonal
<b>Clone ID</b>	2A10F3
<b>Concentration</b>	
<b>Conjugation</b>	Unconjugated
<b>Purification</b>	The antibody was isolated from ascitic fluid by immunoaffinity chromatography using antigens coupled to agarose beads.
<b>Dilution Range</b>	WB 1:500-1:2000 IHC 1:200-1:1000 IF 1:200-1:1000 ELISA 1:10000
<b>Formulation</b>	Ascitic fluid, 0.03% Sodium Azide, 0.5% BSA, 50% Glycerol.
<b>Isotype</b>	IgG2b
<b>Storage Instruction</b>	Store at -20°C for up to 1 year from the date of receipt, and avoid repeat freeze-thaw cycles.

### TARGET INFORMATION

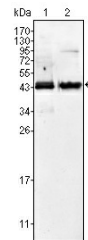
<b>Gene ID</b>	<a href="#">23600</a>
<b>Gene Symbol</b>	<a href="#">AMACR</a>
<b>Uniprot ID</b>	<a href="#">AMACR_HUMAN</a>
<b>Immunogen</b>	Purified recombinant fragment of human AMACR expressed in E.coli.
<b>Immunogen Region</b>	
<b>Specificity</b>	AMACR monoclonal antibody (Alpha-Methylacyl-Coa Racemase) binds to endogenous Alpha-Methylacyl-Coa Racemase.
<b>Immunogen Sequence</b>	



Immunohistochemistry analysis of paraffin-embedded human normal prostate tissues (left) and prostate adenocarcinoma tissues (right) showing cytoplasmic localization with DAB staining using AMACR monoclonal antibody.



Confocal immunofluorescence analysis of LNCaP cells using AMACR monoclonal antibody (green). Red: Actin filaments have been labeled with DY-554 phalloidin. Blue: DRAQ5 fluorescent DNA dye.



Western blot analysis using AMACR monoclonal antibody against Jurkat (1) and LNCaP (2) cell lysate.

This product is suitable for in-vitro studies under the RESEARCH USE ONLY [RUO] licence. This product must not be used as for diagnostic or other medical purposes.  
St John's Laboratory Ltd, Knowledge Dock Business Centre, University Way, London, E16 2RD | Tel: 0208 223 3081